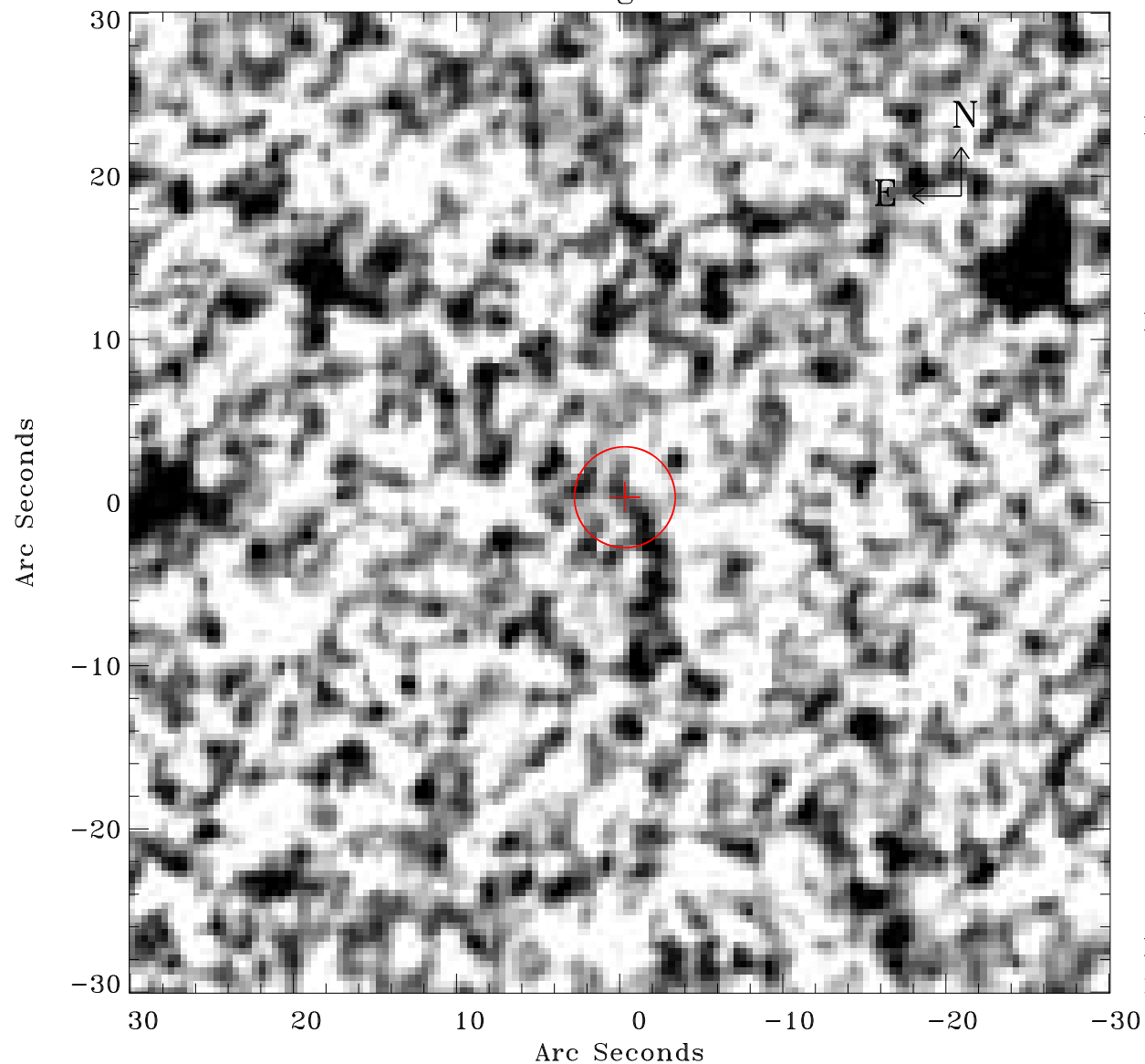


# EPIC source finding chart ACDS V10.0



Principal Investigator :

Dr Marguerite Pierre

XMM target name :

XBCS42b

OBS ID : 677830135

Source number : 49

X-ray coordinates :

$\alpha$  : 23 37 30.58

$\delta$  : -53 09 20.0

Center coordinates :

$\alpha$  : 23 37 30.57

$\delta$  : -53 09 19.9

Plate reference :

Origin : CDS HIPs Network

Plate : MAMA srcj

Pixel : 0.40 "/pix

Error circle :

$R_{90}$  (") : 3.1

XMM SSC

May 3 21:45:08 2019