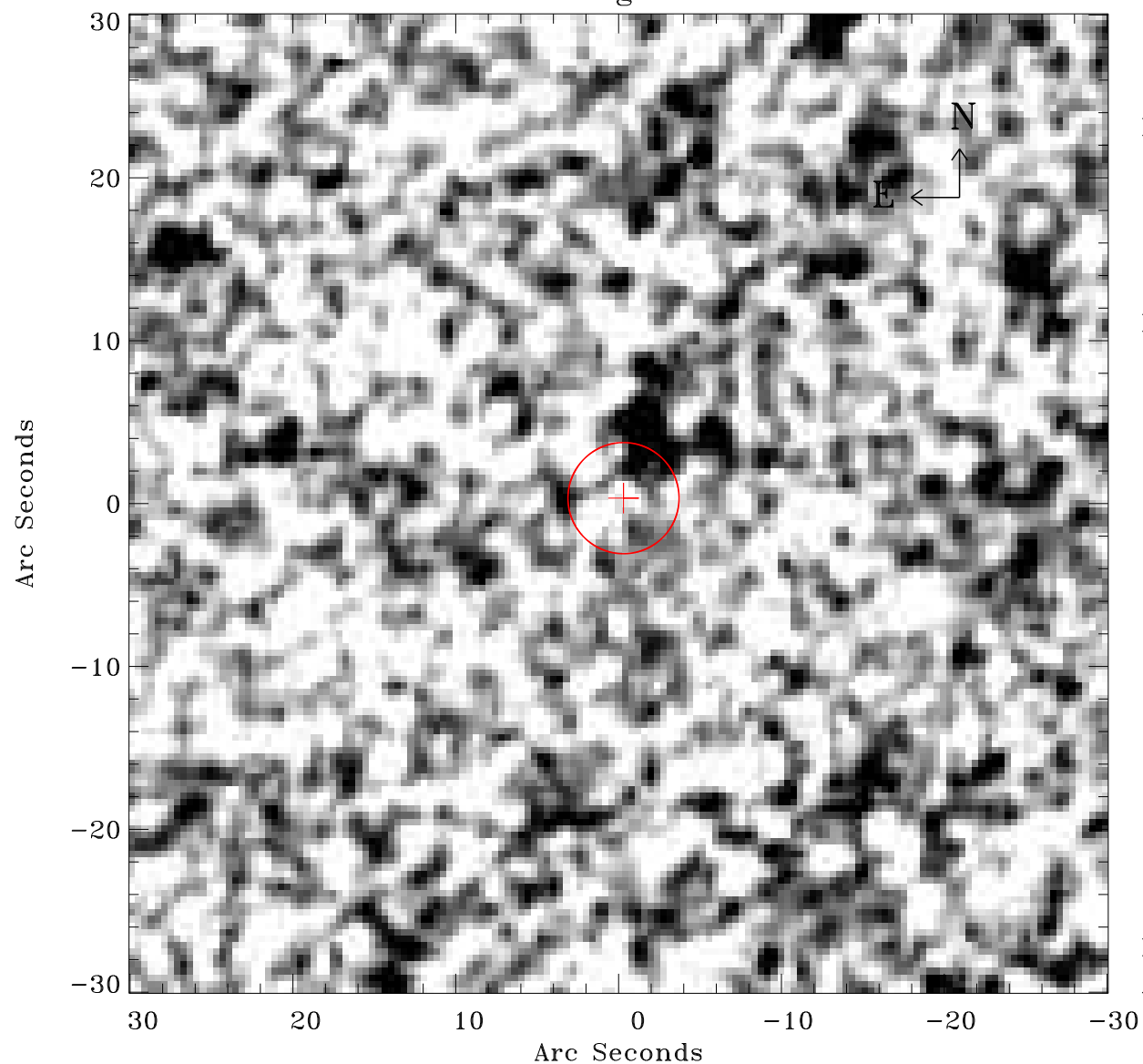


# EPIC source finding chart ACDS V10.0



Principal Investigator :

Dr Marguerite Pierre

XMM target name :

XBCS42b

OBS ID : 677830144

Source number : 38

X-ray coordinates :

$\alpha$  : 23 28 45.37

$\delta$  : -53 57 50.3

Center coordinates :

$\alpha$  : 23 28 45.36

$\delta$  : -53 57 50.2

Plate reference :

Origin : CDS HIPs Network

Plate : MAMA srcj

Pixel : 0.40 "/pix

Error circle :

$R_{90}$  (") : 3.4

XMM SSC

Apr 19 22:12:29 2019