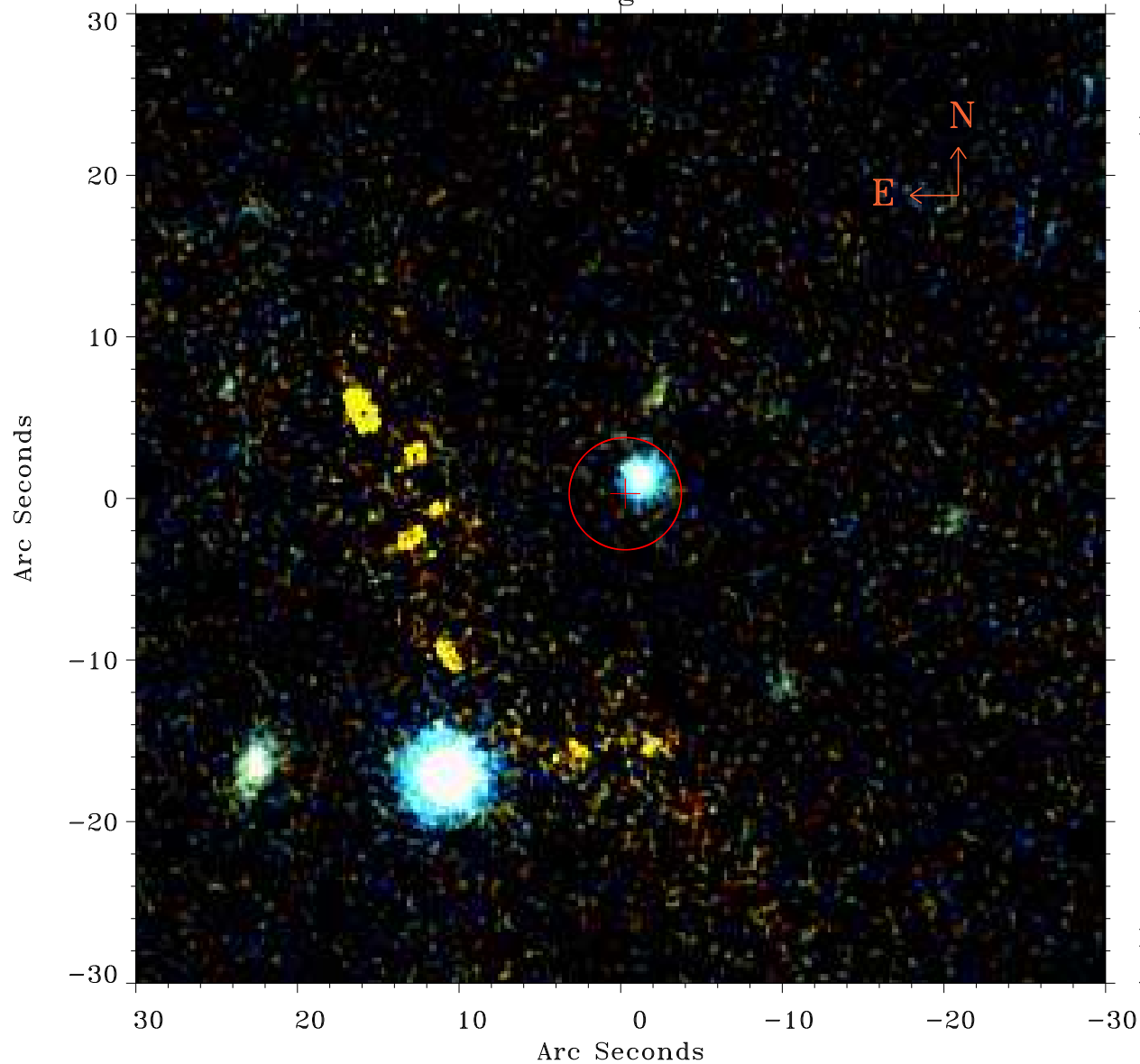


# EPIC source finding chart ACDS V10.0



Principal Investigator :  
Prof Andrzej A. Zdziarski

XMM target name :  
NGC 4151

OBS ID : 679780101  
Source number : 18

X-ray coordinates :  
 $\alpha$  : 12 10 24.14  
 $\delta$  : +39 37 18.4

Center coordinates :  
 $\alpha$  : 12 10 24.14  
 $\delta$  : +39 37 18.3

Plate reference :  
Origin : PanSTARRS-DR1

Color coding :  
z band ●  
(z+g)/2 ●  
g band ●

Error:  
R90 : 3.5 arsec

XMM SSC  
Apr 23 01:19:01 2019