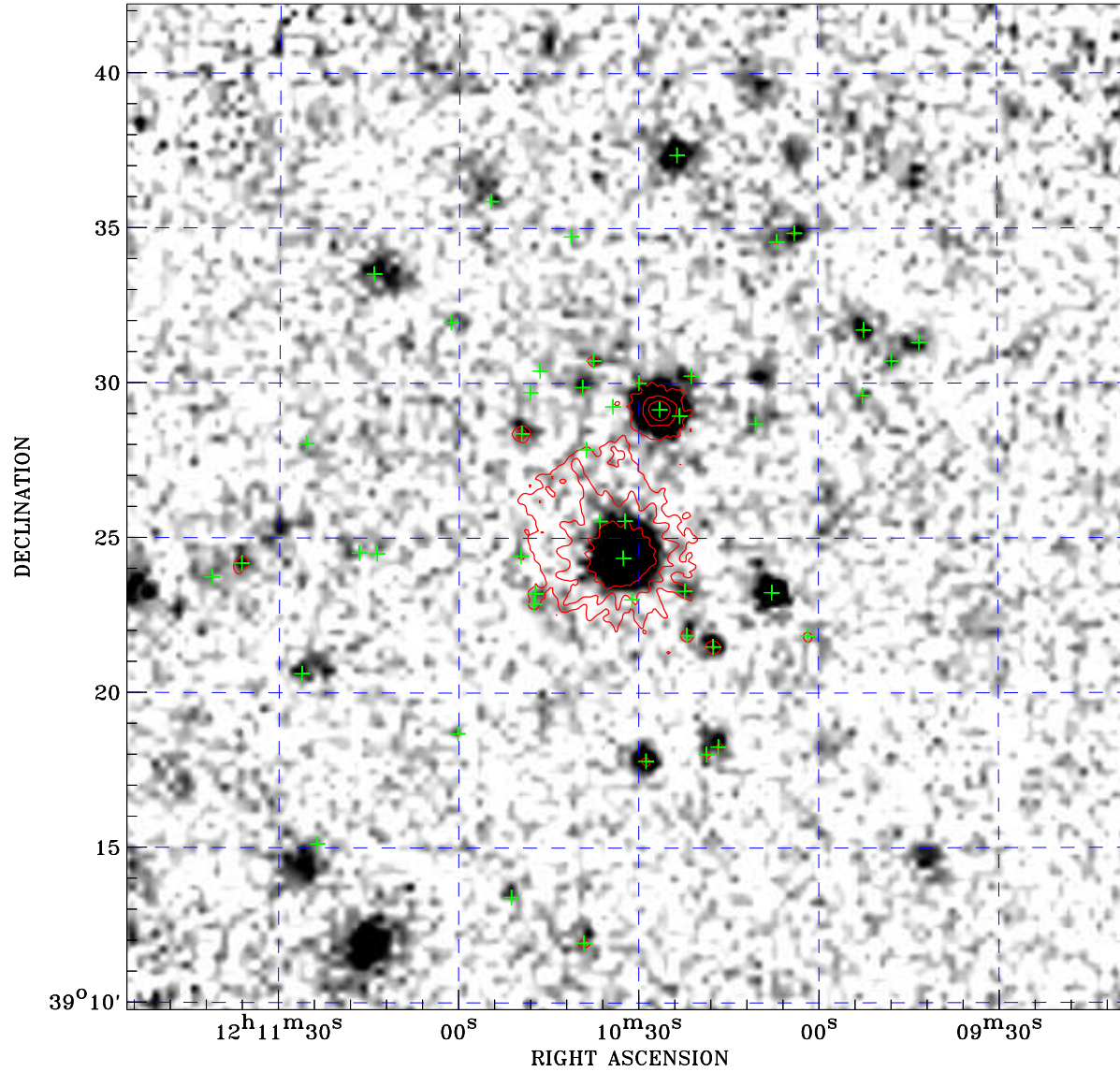



PDF XMM ROSAT image ACDS V10.0



ROSAT image gray scale (Log) :

 $\langle 1.820\text{E-04}$ $\rangle 5.202\text{E-04}$
 (counts s⁻¹)

⊙ Epic image contour
 levels at 2, 7 and 30 σ

+ Detected Epic sources

Principal Investigator :
 Prof Andrzej A. Zdziarski

XMM target name :
 NGC 4151

Observation ID :
 0679780401

Epic image :
 α : 12 10 31.48
 δ : +39 26 01.1
 Energy band : 0.2–12.0 keV
 MOS1 : 9614 s
 MOS2 : 9620 s
 PN : 9476 s

Contour levels (counts) :
 2 σ :1.308E+00 7 σ :4.142E+00
 30 σ :1.718E+01

Nearest ROSAT image
 from Epic image center :
 Observation : 700277p
 Instrument : PSPCB
 α : 12 10 46.74
 δ : +39 21 35.7

Other ROSAT images :
 None

XMM SSC
 May 9 20:07:13 2019