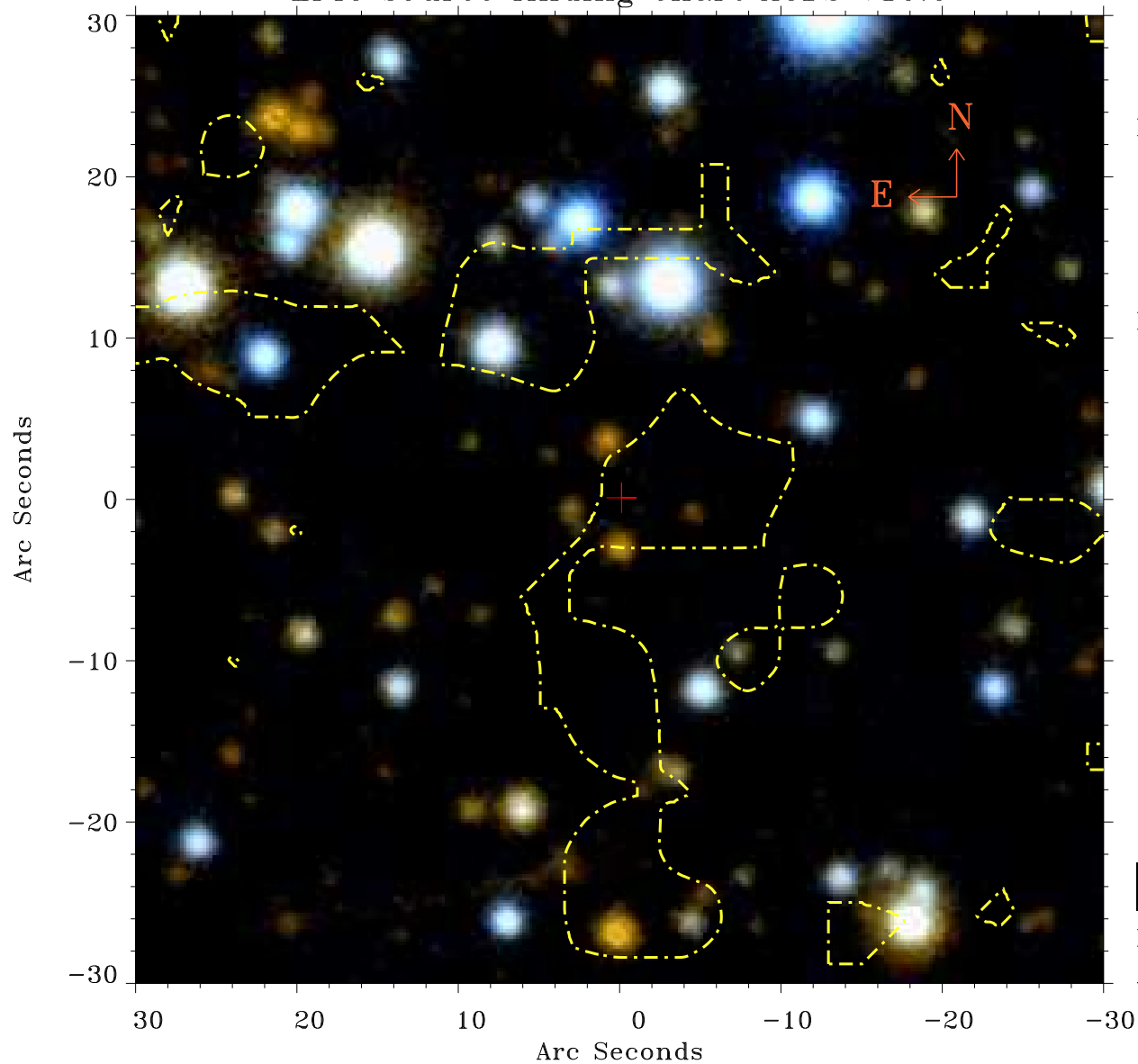


# EPIC source finding chart ACDS V10.0



Principal Investigator :

Dr Sebastian Drave

XMM target name :

IGR J17544-2619

OBS ID : 679810501

Source number : 11

X-ray coordinates :

$\alpha$  : 17 54 20.36

$\delta$  : -26 17 47.7

Center coordinates :

$\alpha$  : 17 54 20.36

$\delta$  : -26 17 47.6

Plate reference :

Origin : PanSTARRS-DR1

Color coding :

z band ●

(z+g)/2 ●

g band ●

Contour levels (counts) :



XMM SSC

Apr 24 03:10:13 2019