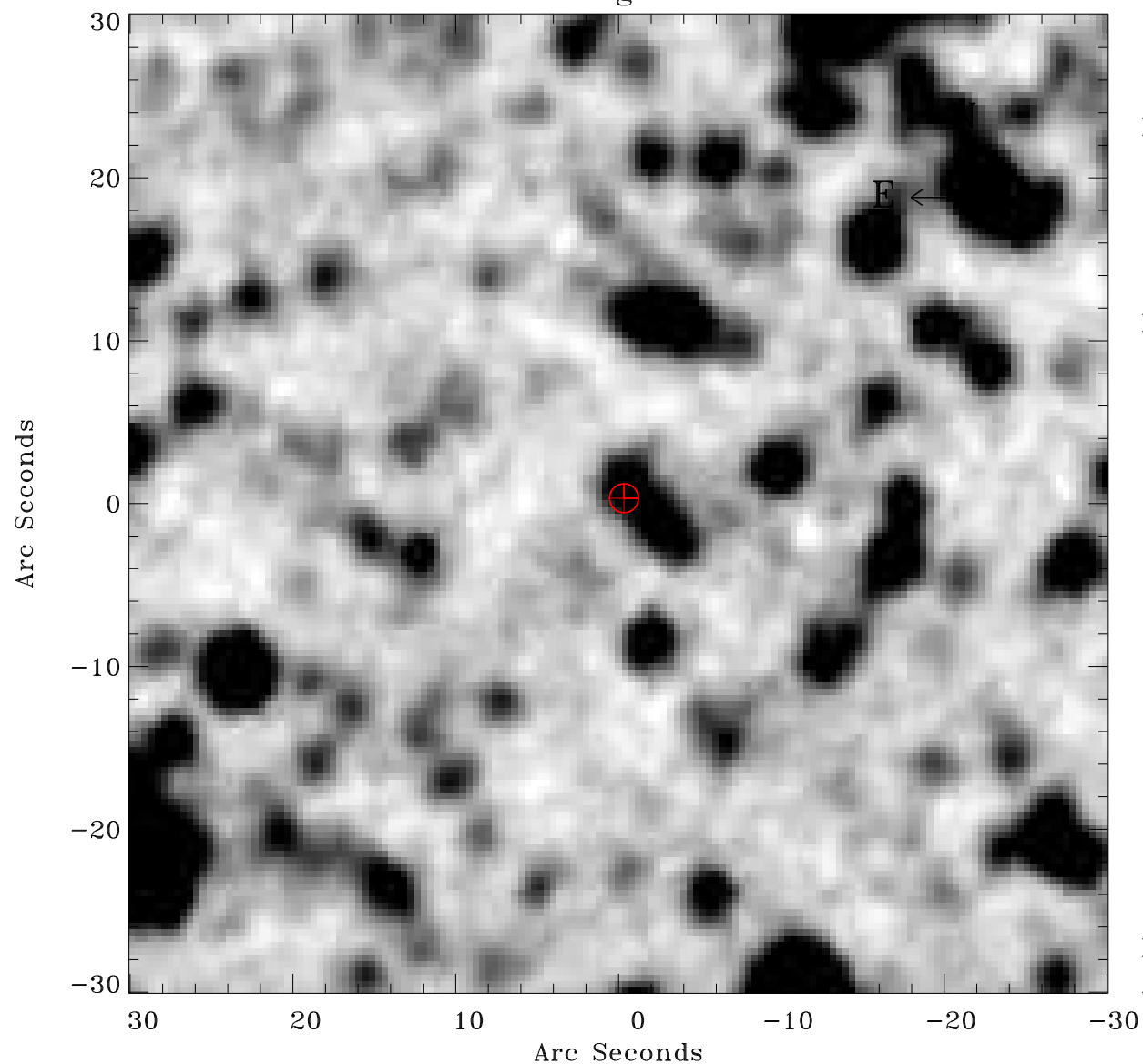


# EPIC source finding chart ACDS V10.0



Principal Investigator :

Dr Frank Haberl

XMM target name :

LMC survey 5

OBS ID : 690740501

Source number : 2

X-ray coordinates :

$\alpha$  : 05 33 08.44

$\delta$  : -68 00 29.3

Center coordinates :

$\alpha$  : 05 33 08.42

$\delta$  : -68 00 29.2

Plate reference :

Origin : CDS HIPs Network

Plate : MAMA srcj

Pixel : 0.40 "/pix

Error circle :

$R_{90}$  (") : 0.9

XMM SSC

Apr 26 05:19:10 2019