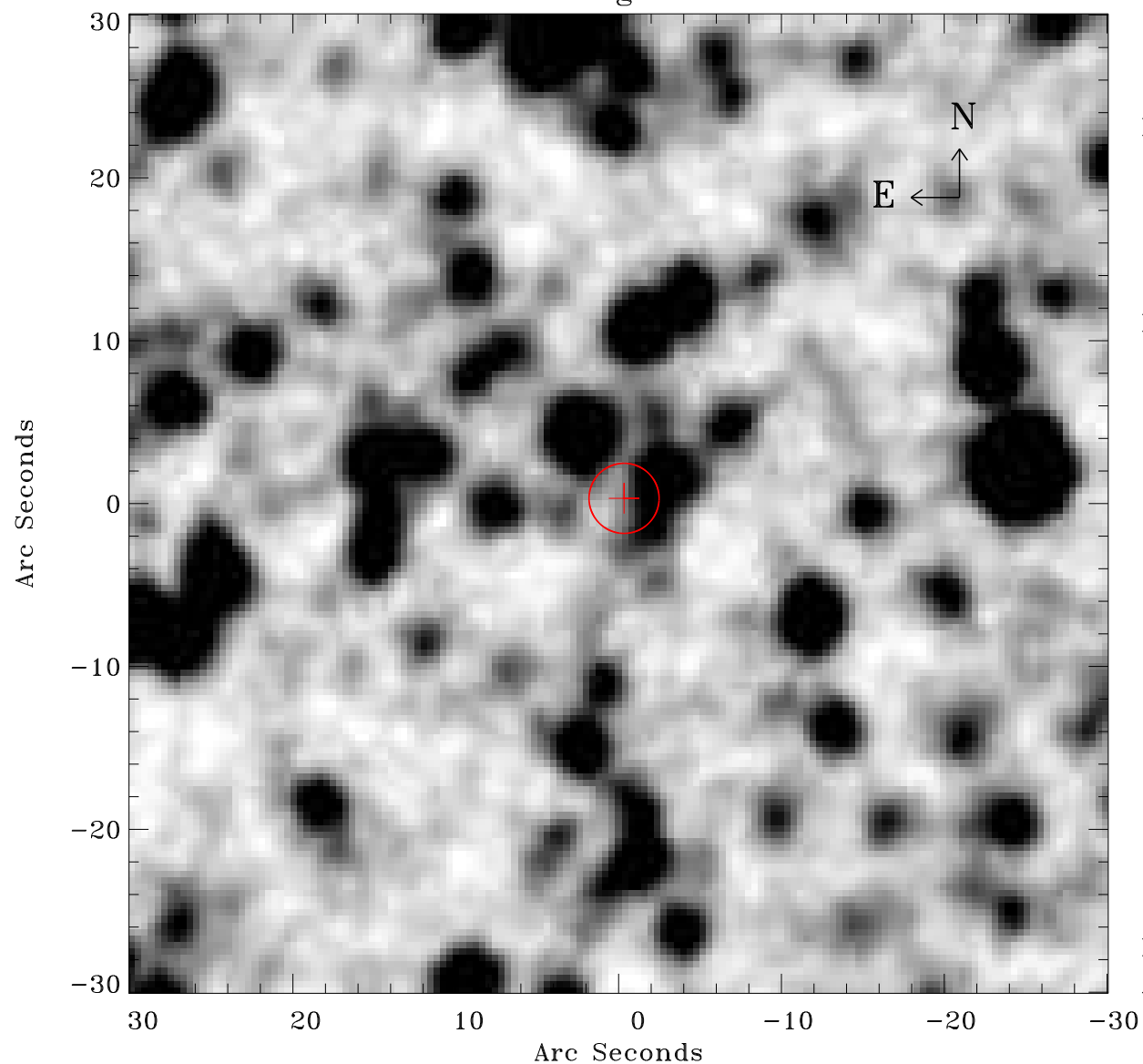


# EPIC source finding chart ACDS V10.0



Principal Investigator :

Dr Frank Haberl

XMM target name :

LMC survey 5

OBS ID : 690740501

Source number : 32

X-ray coordinates :

$\alpha$  : 05 31 44.46

$\delta$  : -67 53 44.5

Center coordinates :

$\alpha$  : 05 31 44.45

$\delta$  : -67 53 44.4

Plate reference :

Origin : CDS HIPs Network

Plate : MAMA srcj

Pixel : 0.40 "/pix

Error circle :

$R_{90}$  (") : 2.1

XMM SSC

Apr 26 05:16:23 2019