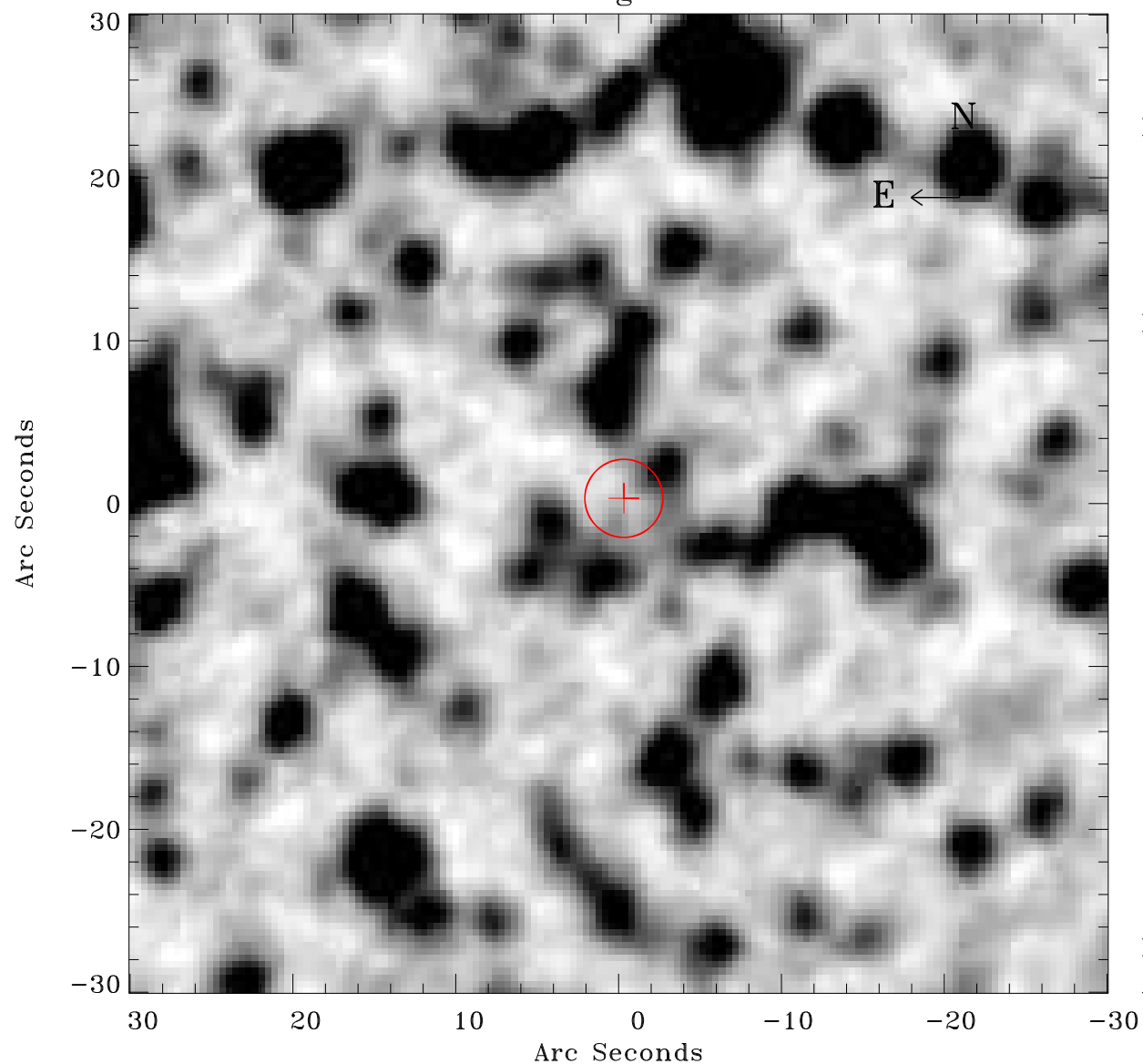


EPIC source finding chart ACDS V10.0



Principal Investigator :

Dr Frank Haberl

XMM target name :

LMC survey 5

OBS ID : 690740501

Source number : 45

X-ray coordinates :

α : 05 32 49.77

δ : -67 51 39.1

Center coordinates :

α : 05 32 49.76

δ : -67 51 39.1

Plate reference :

Origin : CDS HIPs Network

Plate : MAMA srcj

Pixel : 0.40 "/pix

Error circle :

R_{90} (") : 2.4

XMM SSC

Apr 26 05:18:32 2019