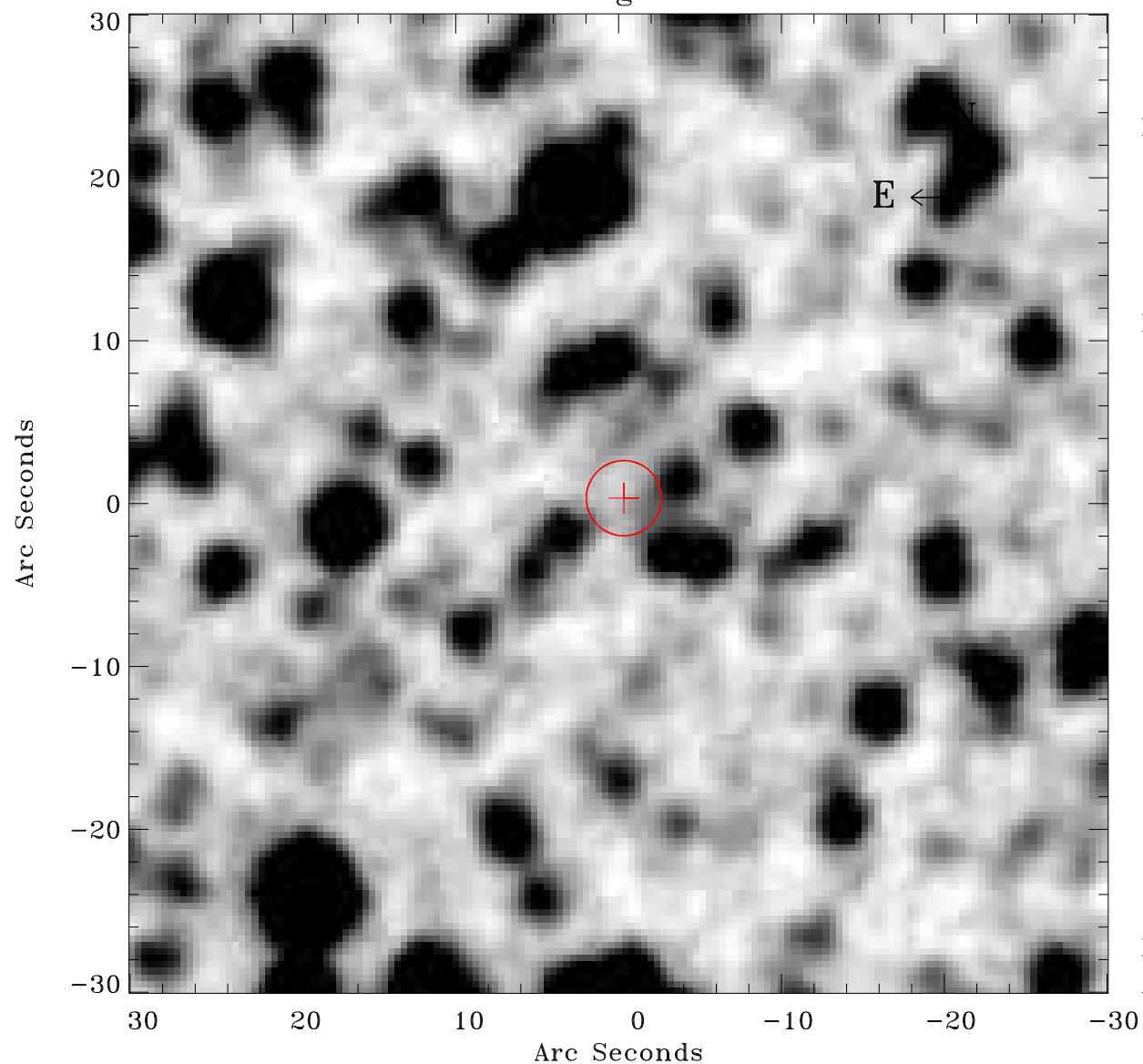


EPIC source finding chart ACDS V10.0



Principal Investigator :

Dr Frank Haberl

XMM target name :

LMC survey 5

OBS ID : 690740501

Source number : 47

X-ray coordinates :

α : 05 32 33.73

δ : -67 56 28.7

Center coordinates :

α : 05 32 33.72

δ : -67 56 28.6

Plate reference :

Origin : CDS HIPs Network

Plate : MAMA srcj

Pixel : 0.40 "/pix

Error circle :

R_{90} (") : 2.3

XMM SSC

Apr 26 05:17:42 2019