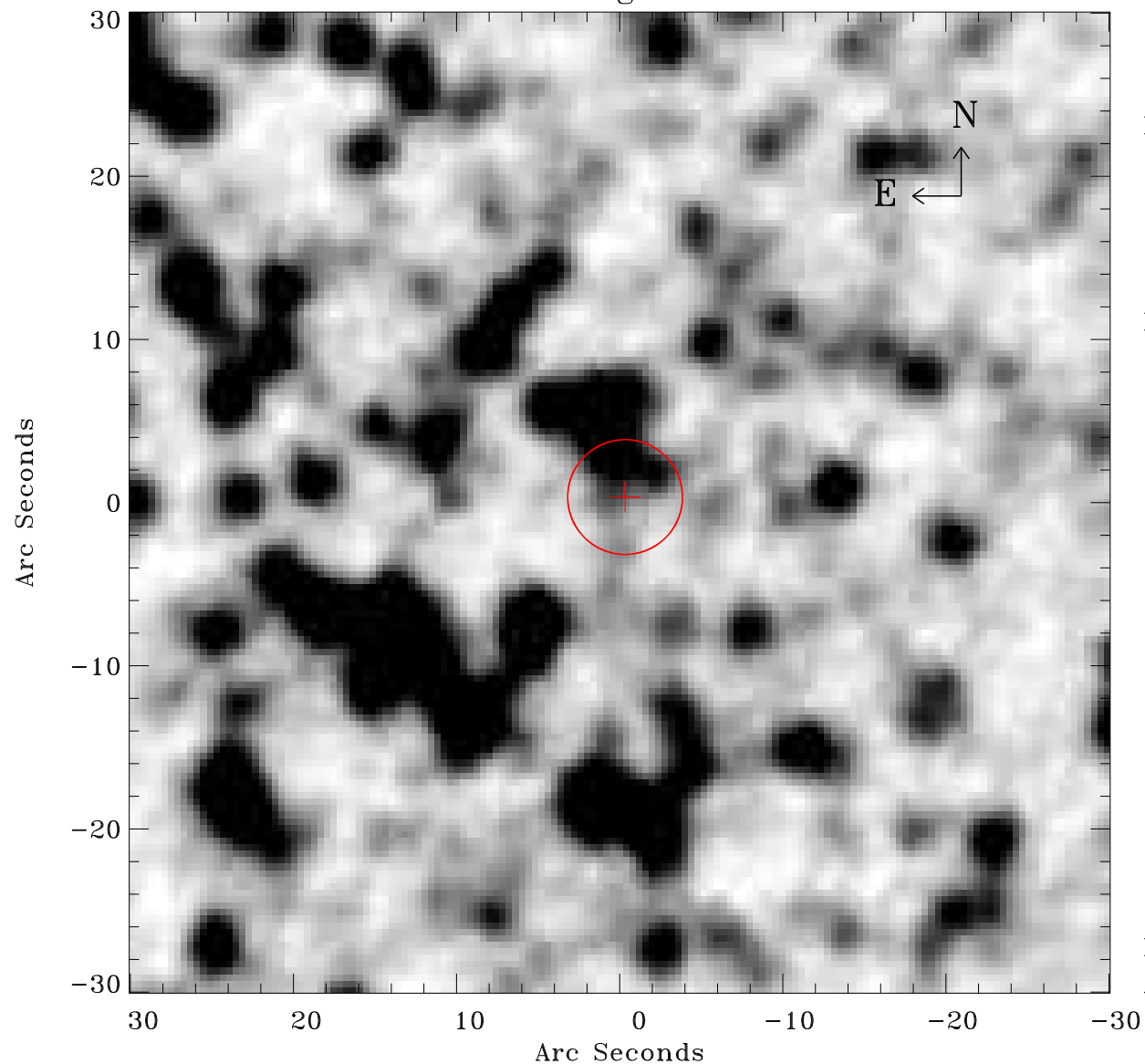


EPIC source finding chart ACDS V10.0



Principal Investigator :

Dr Frank Haberl

XMM target name :

LMC survey 5

OBS ID : 690740501

Source number : 49

X-ray coordinates :

α : 05 30 04.47

δ : -68 07 19.3

Center coordinates :

α : 05 30 04.45

δ : -68 07 19.3

Plate reference :

Origin : CDS HIPs Network

Plate : MAMA srcj

Pixel : 0.40 "/pix

Error circle :

R_{90} (") : 3.5

XMM SSC

Apr 26 05:13:22 2019