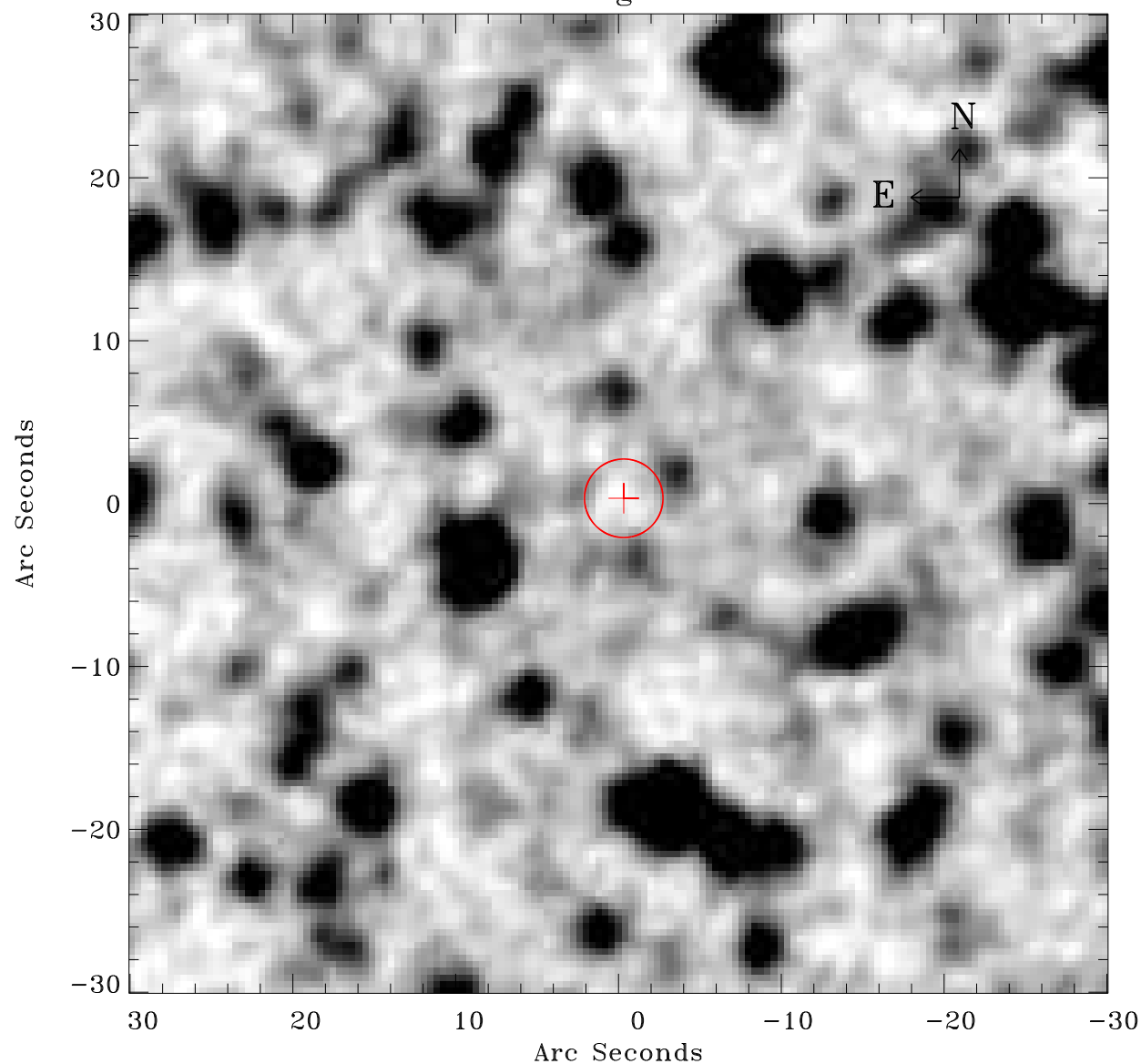


# EPIC source finding chart ACDS V10.0



Principal Investigator :

Dr Frank Haberl

XMM target name :

LMC survey 5

OBS ID : 690740501

Source number : 51

X-ray coordinates :

$\alpha$  : 05 31 41.70

$\delta$  : -67 55 28.0

Center coordinates :

$\alpha$  : 05 31 41.69

$\delta$  : -67 55 27.9

Plate reference :

Origin : CDS HIPs Network

Plate : MAMA srcj

Pixel : 0.40 "/pix

Error circle :

$R_{90}$  (") : 2.4

XMM SSC

Apr 26 05:16:16 2019