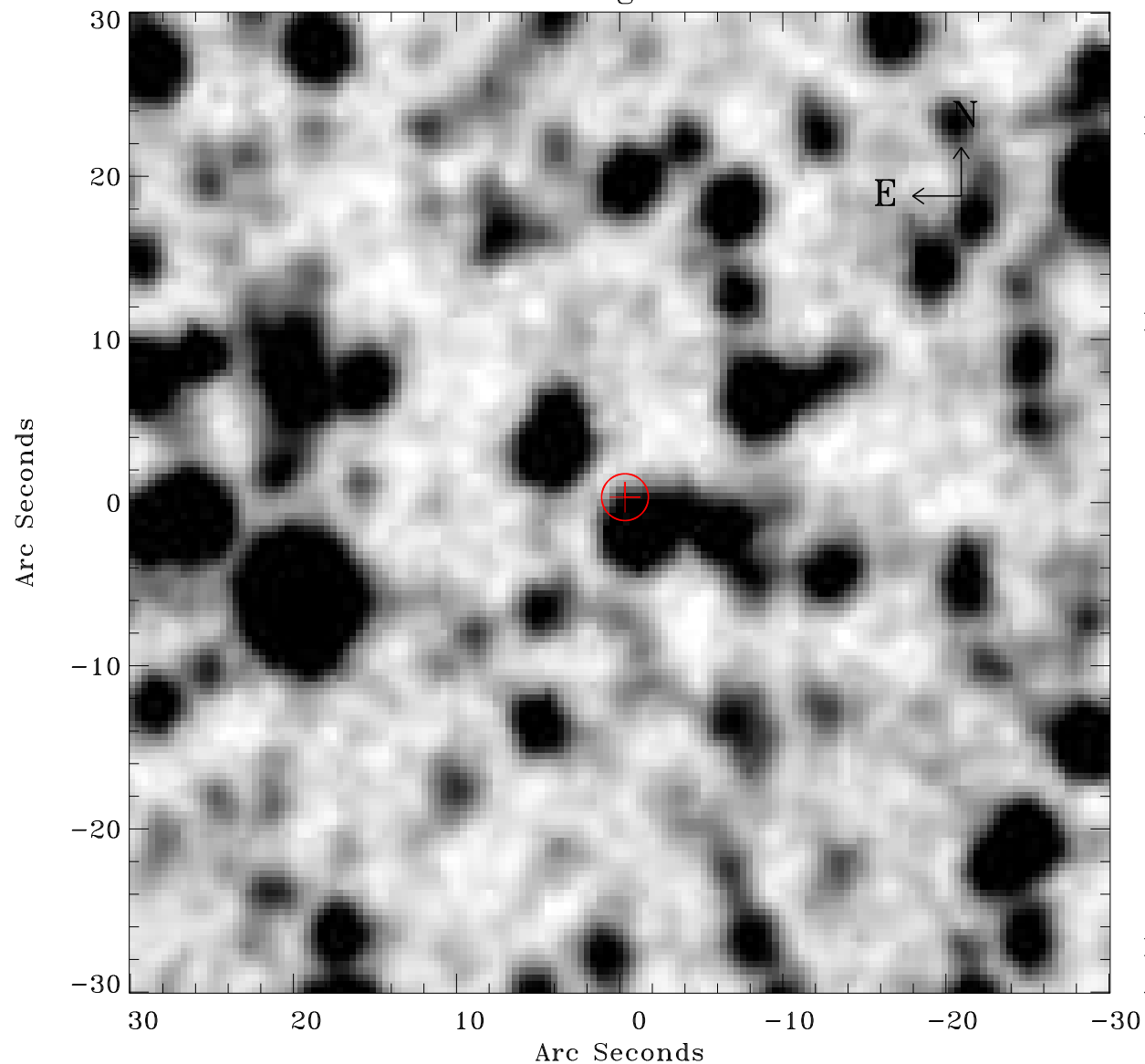


EPIC source finding chart ACDS V10.0



Principal Investigator :

Dr Frank Haberl

XMM target name :

LMC survey 11

OBS ID : 690741101

Source number : 2

X-ray coordinates :

α : 05 19 07.13

δ : -68 03 01.0

Center coordinates :

α : 05 19 07.12

δ : -68 03 00.9

Plate reference :

Origin : CDS HIPs Network

Plate : MAMA srcj

Pixel : 0.40 "/pix

Error circle :

R_{90} (") : 1.4

XMM SSC

Apr 21 06:17:47 2019