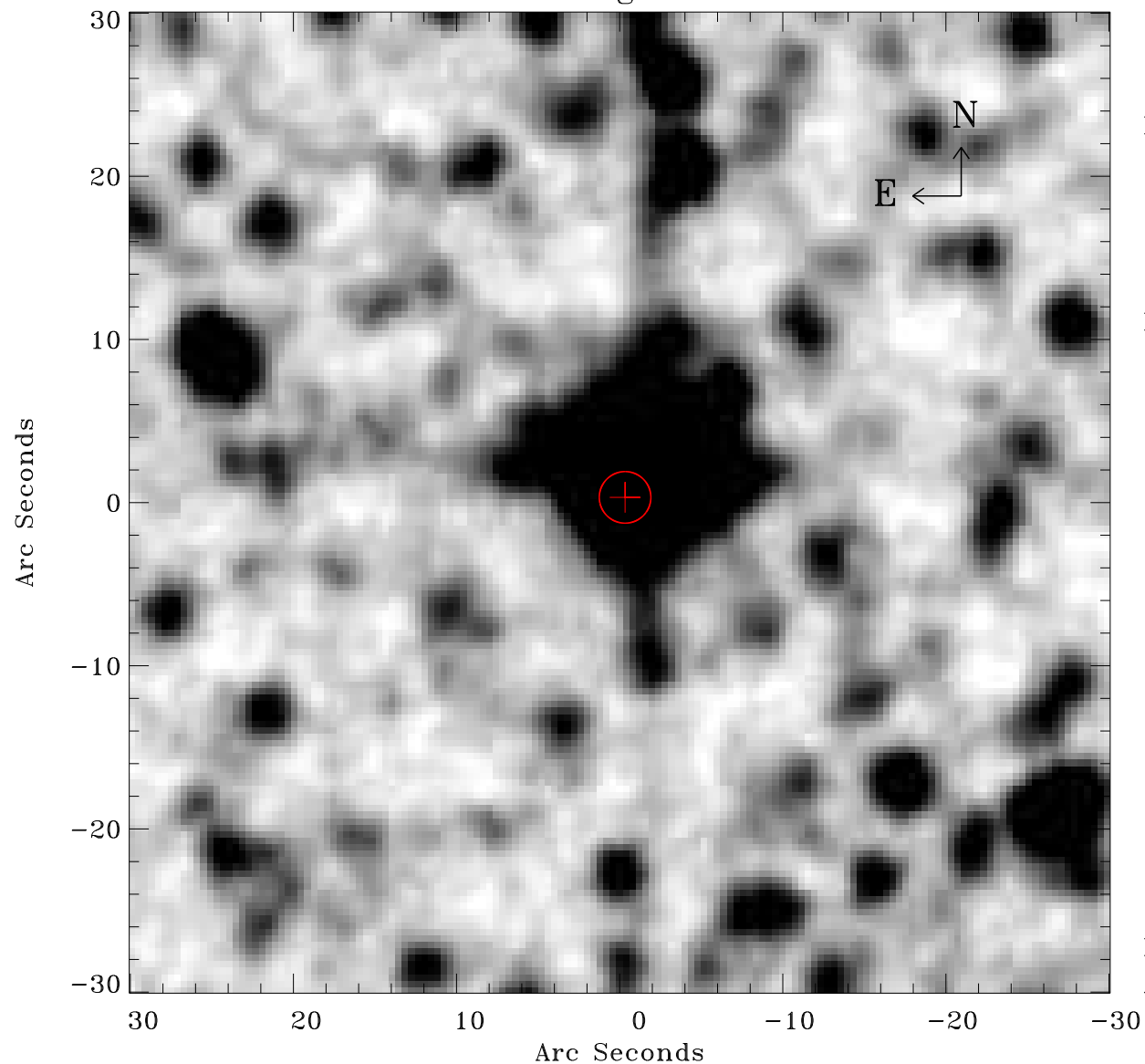


EPIC source finding chart ACDS V10.0



Principal Investigator :

Dr Frank Haberl

XMM target name :

LMC survey 11

OBS ID : 690741101

Source number : 11

X-ray coordinates :

α : 05 17 12.58

δ : -68 06 42.7

Center coordinates :

α : 05 17 12.57

δ : -68 06 42.6

Plate reference :

Origin : CDS HIPs Network

Plate : MAMA srcj

Pixel : 0.40 "/pix

Error circle :

R_{90} (") : 1.6

XMM SSC

Apr 21 06:16:23 2019