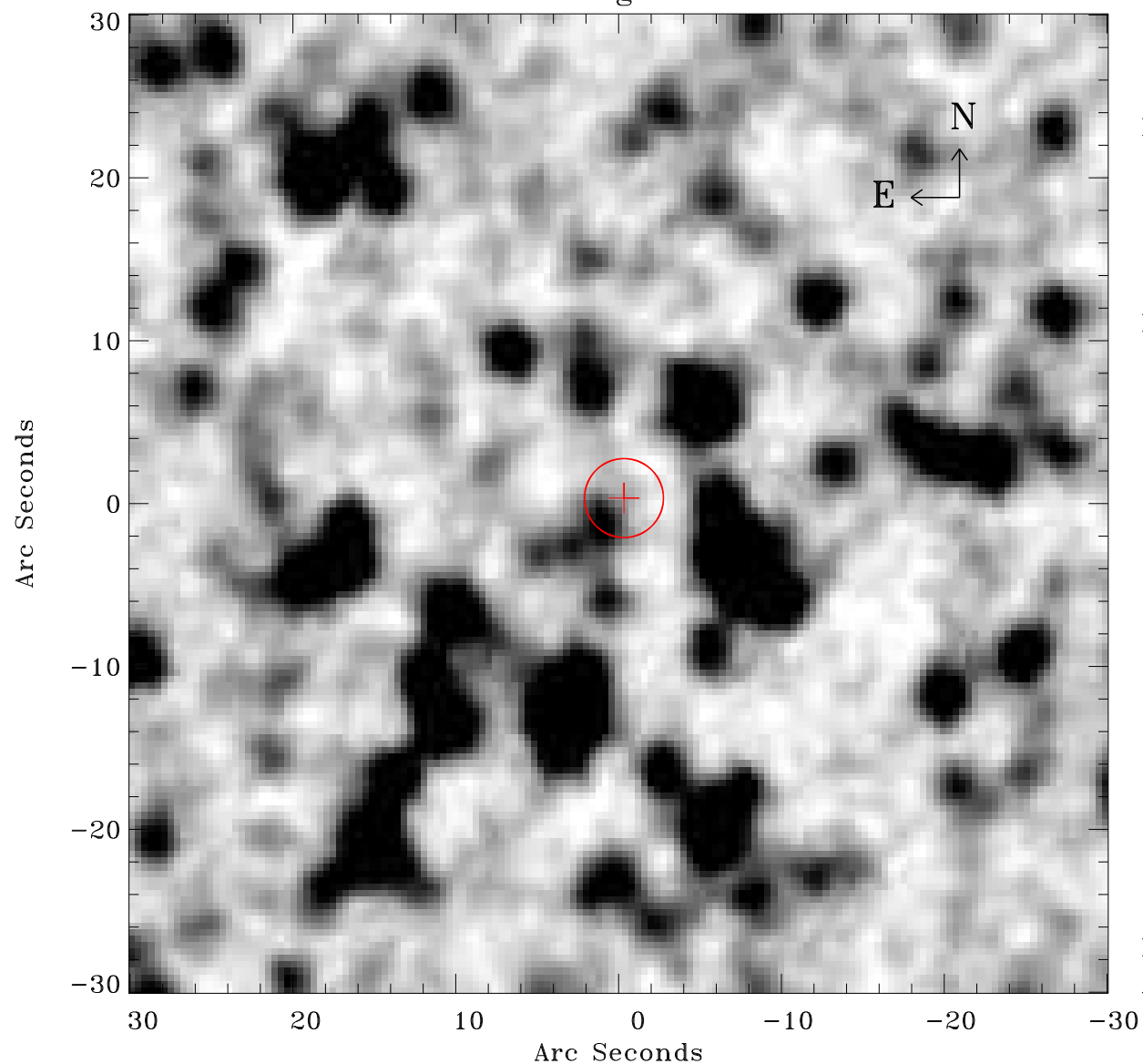


# EPIC source finding chart ACDS V10.0



Principal Investigator :

Dr Frank Haberl

XMM target name :

LMC survey 11

OBS ID : 690741101

Source number : 25

X-ray coordinates :

$\alpha$  : 05 19 55.87

$\delta$  : -67 56 28.0

Center coordinates :

$\alpha$  : 05 19 55.85

$\delta$  : -67 56 28.0

Plate reference :

Origin : CDS HIPs Network

Plate : MAMA srcj

Pixel : 0.40 "/pix

Error circle :

$R_{90}$  (") : 2.4

XMM SSC

Apr 21 06:17:59 2019