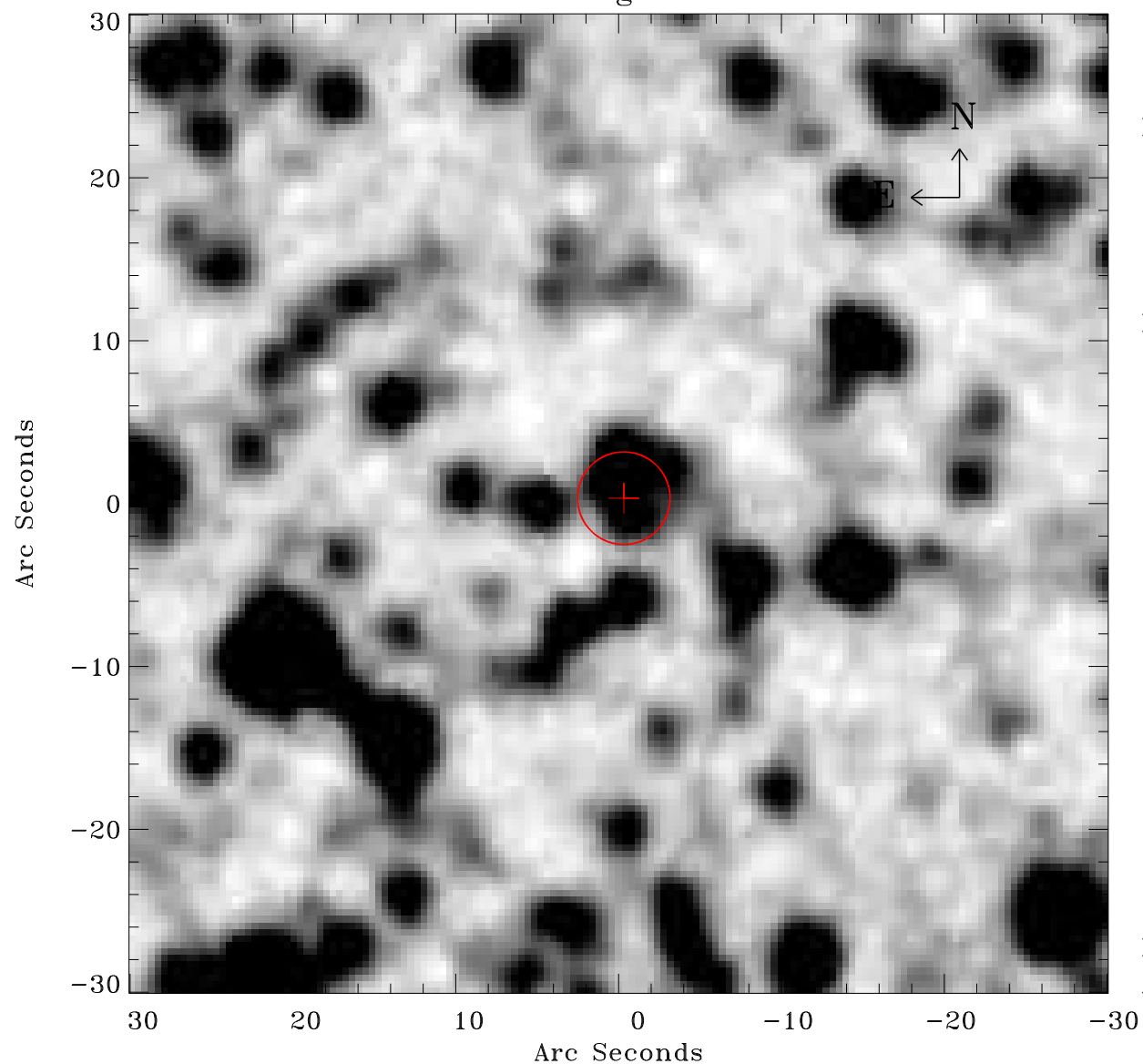


# EPIC source finding chart ACDS V10.0



Principal Investigator :

Dr Frank Haberl

XMM target name :

LMC survey 11

OBS ID : 690741101

Source number : 44

X-ray coordinates :

$\alpha$  : 05 17 26.28

$\delta$  : -67 54 34.9

Center coordinates :

$\alpha$  : 05 17 26.27

$\delta$  : -67 54 34.8

Plate reference :

Origin : CDS HIPs Network

Plate : MAMA srcj

Pixel : 0.40 "/pix

Error circle :

$R_{90}$  (") : 2.8

XMM SSC

Apr 21 06:16:36 2019