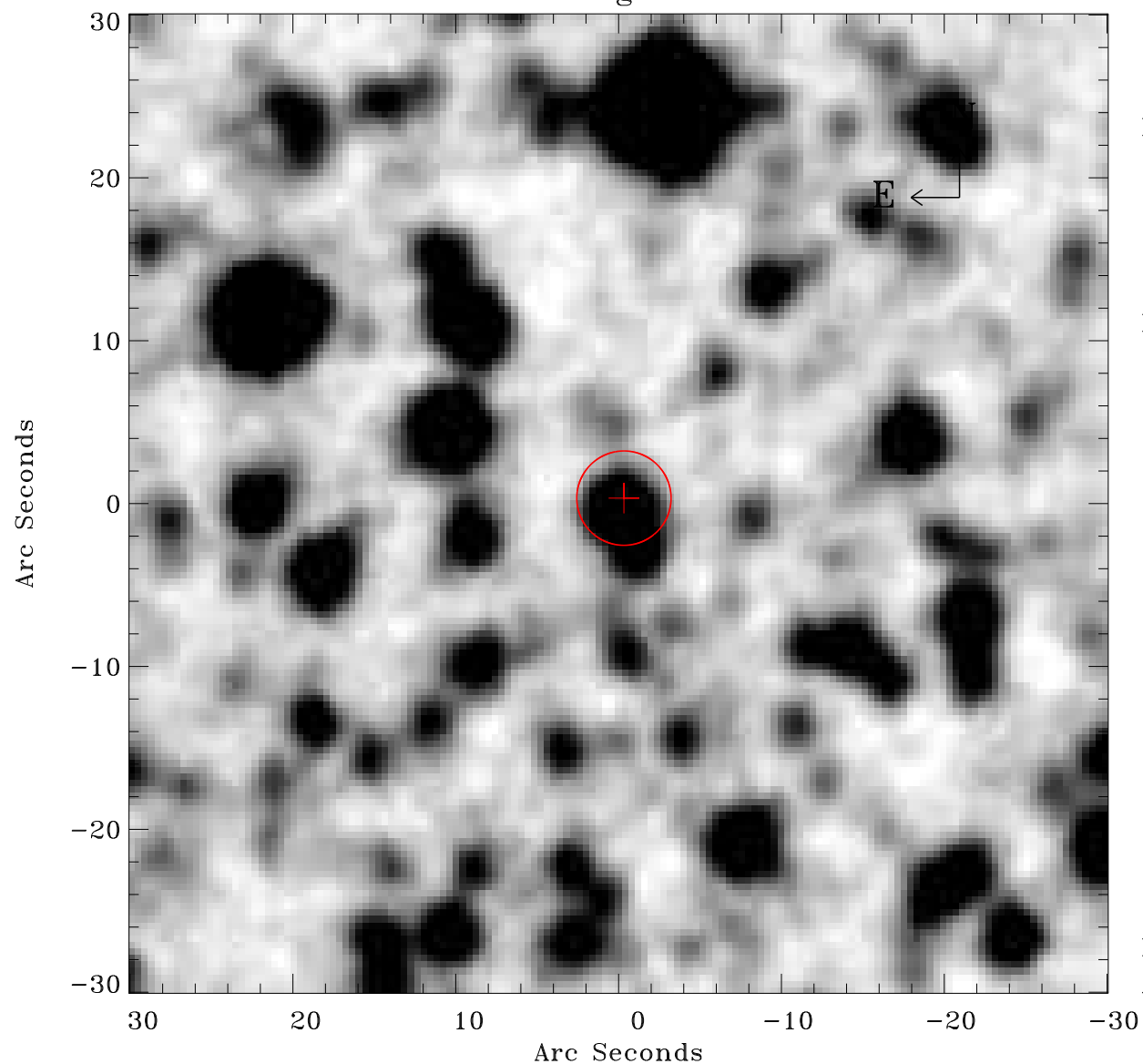


# EPIC source finding chart ACDS V10.0



Principal Investigator :

Dr Frank Haberl

XMM target name :

LMC survey 11

OBS ID : 690741101

Source number : 56

X-ray coordinates :

$\alpha$  : 05 18 56.74

$\delta$  : -68 00 06.1

Center coordinates :

$\alpha$  : 05 18 56.73

$\delta$  : -68 00 06.1

Plate reference :

Origin : CDS HIPs Network

Plate : MAMA srcj

Pixel : 0.40 "/pix

Error circle :

$R_{90}$  (") : 2.9

XMM SSC

Apr 21 06:17:37 2019