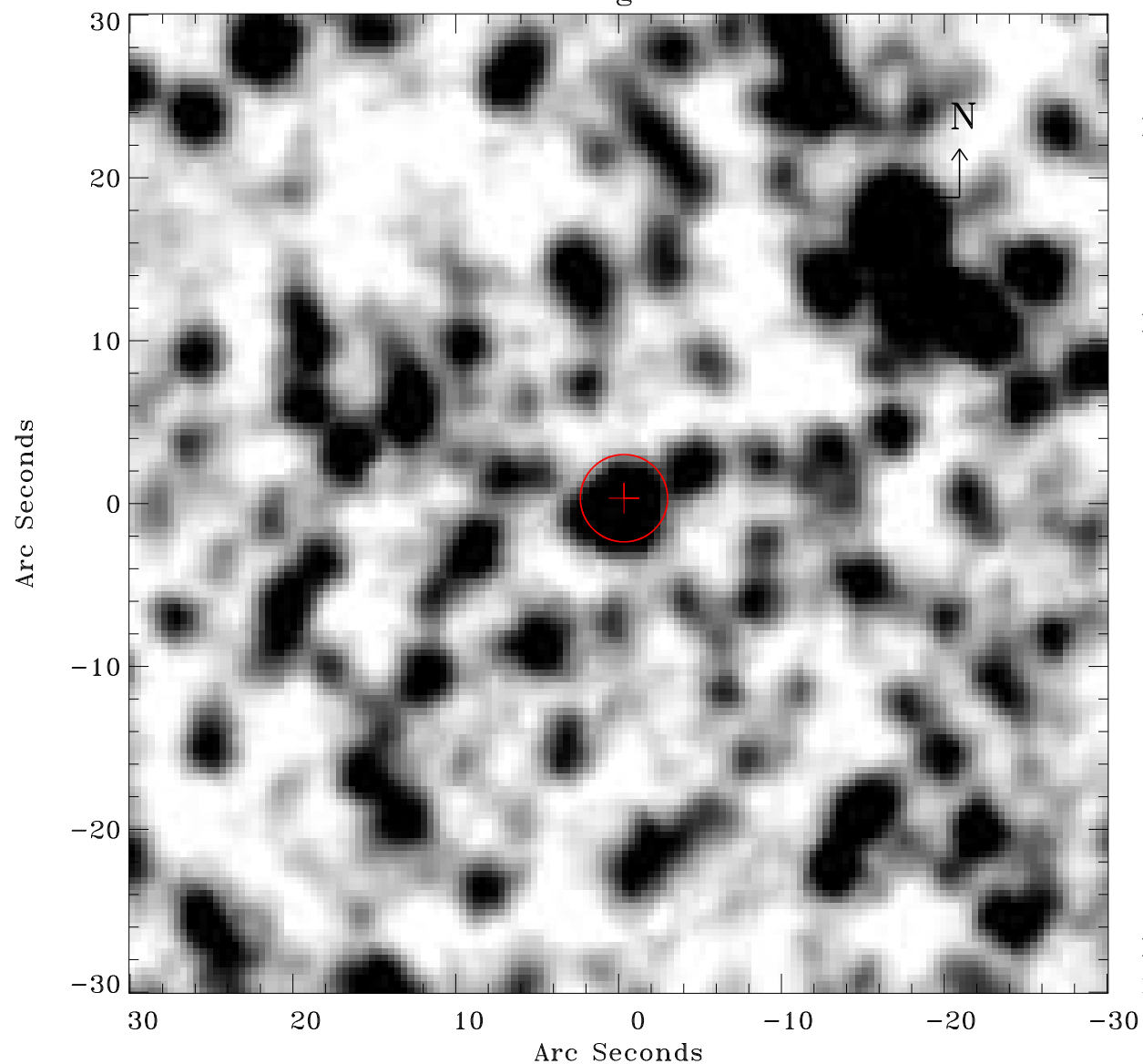


EPIC source finding chart ACDS V10.0



Principal Investigator :

Dr Frank Haberl

XMM target name :

LMC survey 14

OBS ID : 690741401

Source number : 10

X-ray coordinates :

α : 05 23 21.17

δ : -68 35 39.8

Center coordinates :

α : 05 23 21.16

δ : -68 35 39.8

Plate reference :

Origin : CDS HIPs Network

Plate : MAMA srcj

Pixel : 0.40 "/pix

Error circle :

R_{90} (") : 2.7

XMM SSC

May 2 12:32:23 2019