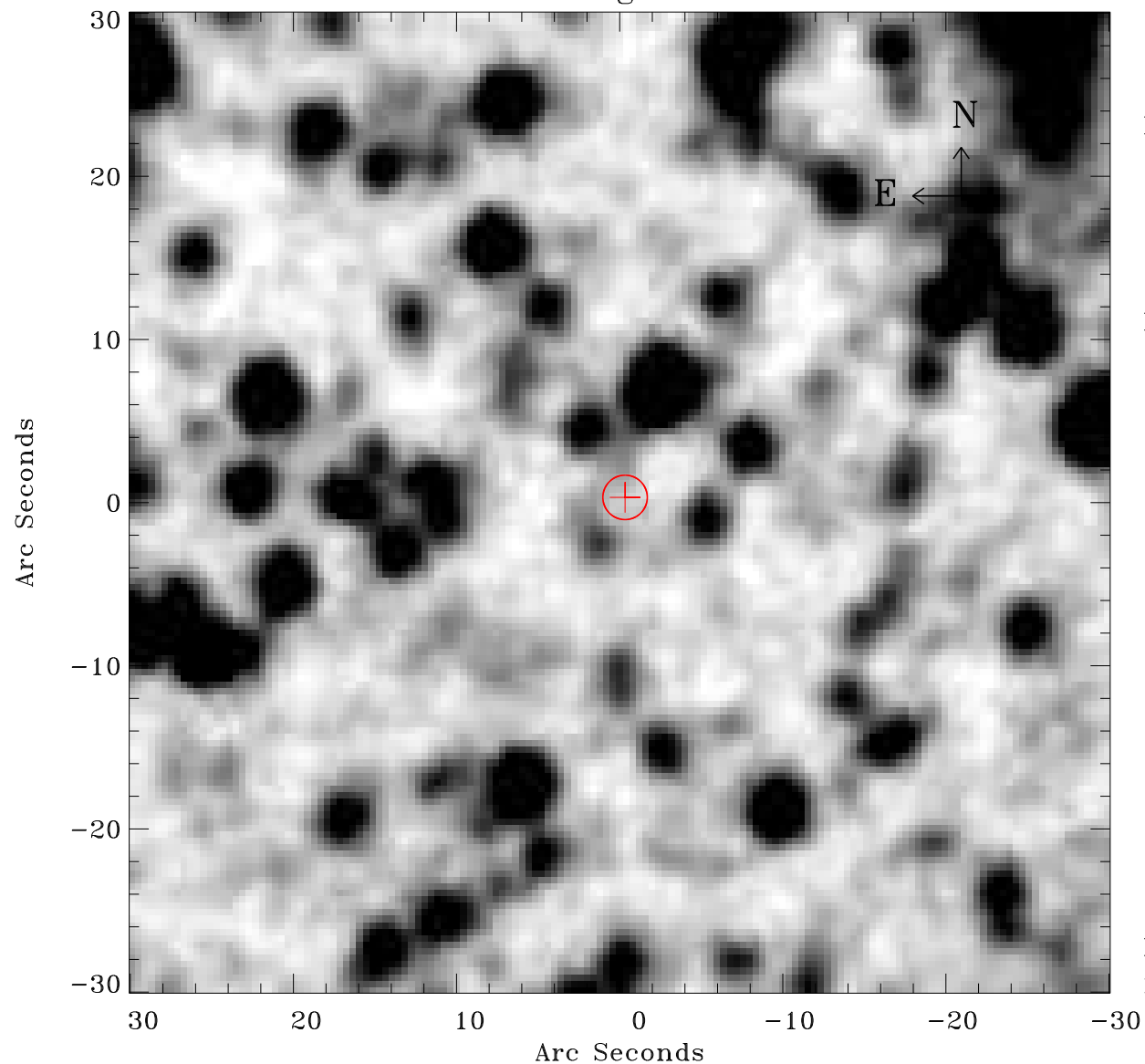


EPIC source finding chart ACDS V10.0



Principal Investigator :

Dr Frank Haberl

XMM target name :

LMC survey 16

OBS ID : 690741601

Source number : 2

X-ray coordinates :

α : 05 32 33.48

δ : -68 14 40.2

Center coordinates :

α : 05 32 33.47

δ : -68 14 40.1

Plate reference :

Origin : CDS HIPs Network

Plate : MAMA srcj

Pixel : 0.40 "/pix

Error circle :

R_{90} (") : 1.3

XMM SSC

May 1 20:40:49 2019