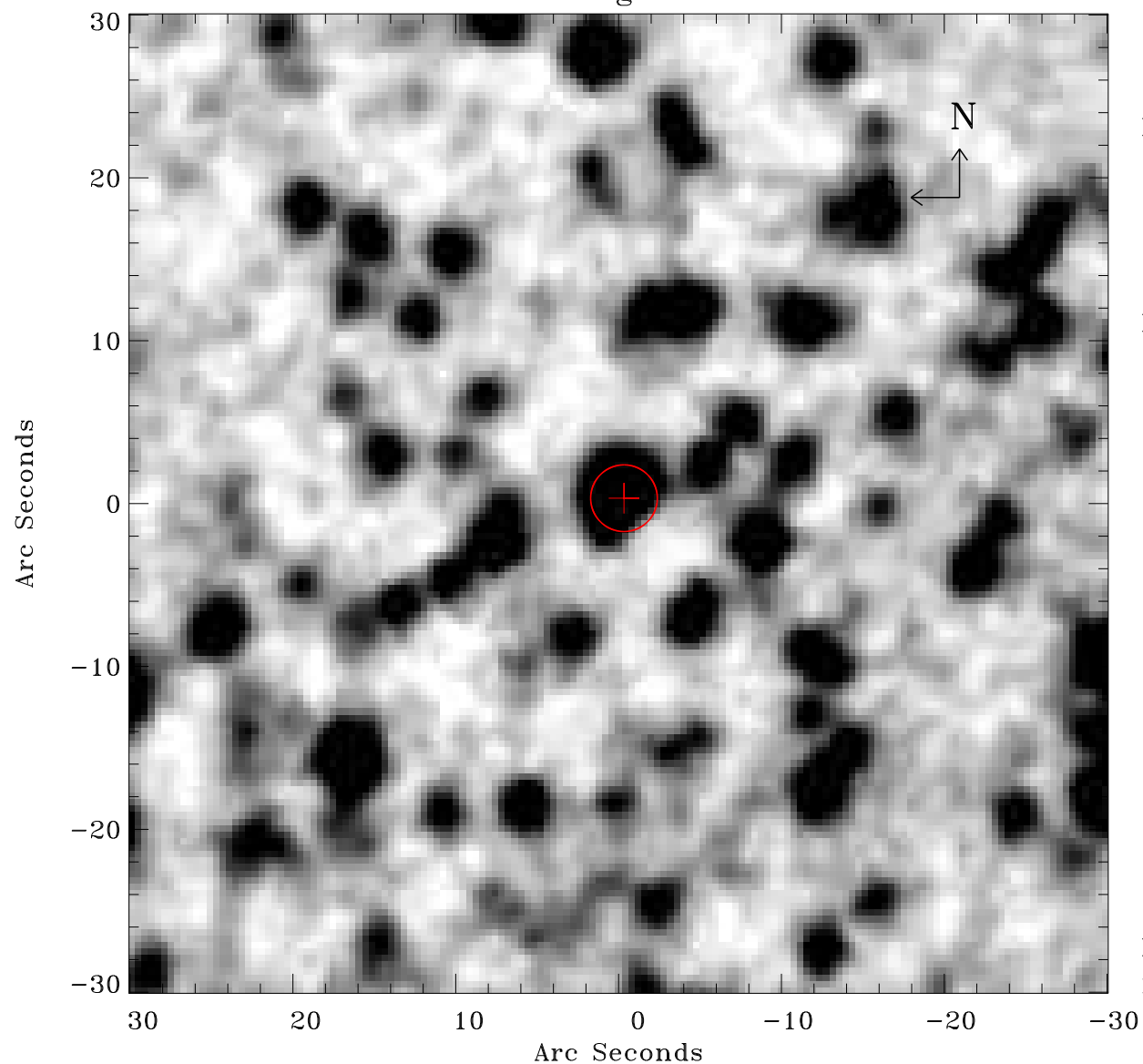


# EPIC source finding chart ACDS V10.0



Principal Investigator :

Dr Frank Haberl

XMM target name :

LMC survey 16

OBS ID : 690741601

Source number : 22

X-ray coordinates :

$\alpha$  : 05 31 30.34

$\delta$  : -68 20 15.4

Center coordinates :

$\alpha$  : 05 31 30.33

$\delta$  : -68 20 15.3

Plate reference :

Origin : CDS HIPs Network

Plate : MAMA srcj

Pixel : 0.40 "/pix

Error circle :

$R_{90}$  (") : 2.0

XMM SSC

May 1 20:40:28 2019