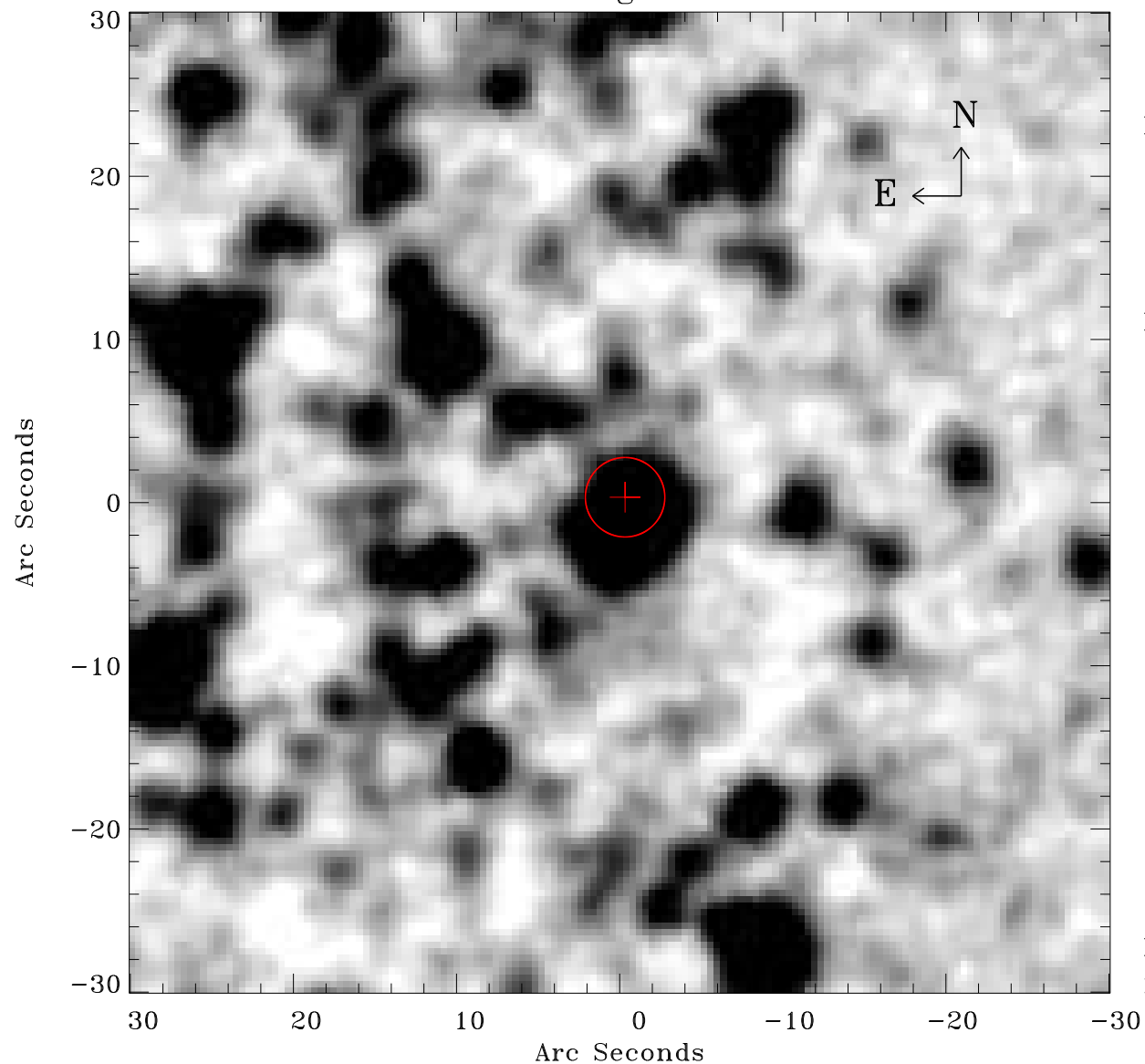


# EPIC source finding chart ACDS V10.0



Principal Investigator :

Dr Frank Haberl

XMM target name :

LMC survey 16

OBS ID : 690741601

Source number : 41

X-ray coordinates :

$\alpha$  : 05 30 59.48

$\delta$  : -68 32 52.9

Center coordinates :

$\alpha$  : 05 30 59.46

$\delta$  : -68 32 52.8

Plate reference :

Origin : CDS HIPs Network

Plate : MAMA srcj

Pixel : 0.40 "/pix

Error circle :

$R_{90}$  (") : 2.4

XMM SSC

May 1 20:40:03 2019