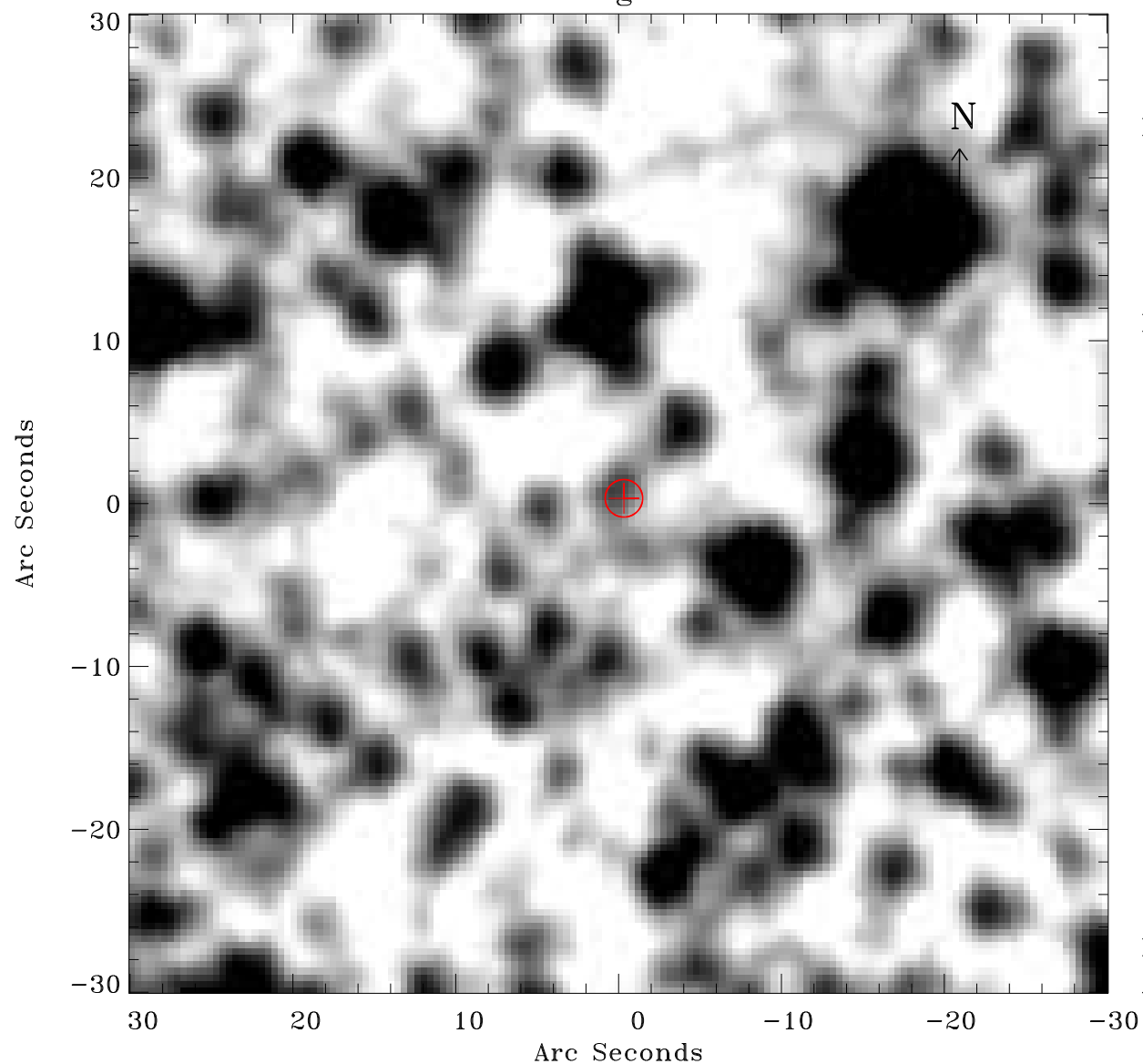


EPIC source finding chart ACDS V10.0



Principal Investigator :

Dr Frank Haberl

XMM target name :

LMC survey 25

OBS ID : 690742501

Source number : 5

X-ray coordinates :

α : 05 07 18.84

δ : -68 24 54.9

Center coordinates :

α : 05 07 18.83

δ : -68 24 54.8

Plate reference :

Origin : CDS HIPs Network

Plate : MAMA srcj

Pixel : 0.40 "/pix

Error circle :

R_{90} (") : 1.1

XMM SSC

Apr 28 15:51:29 2019