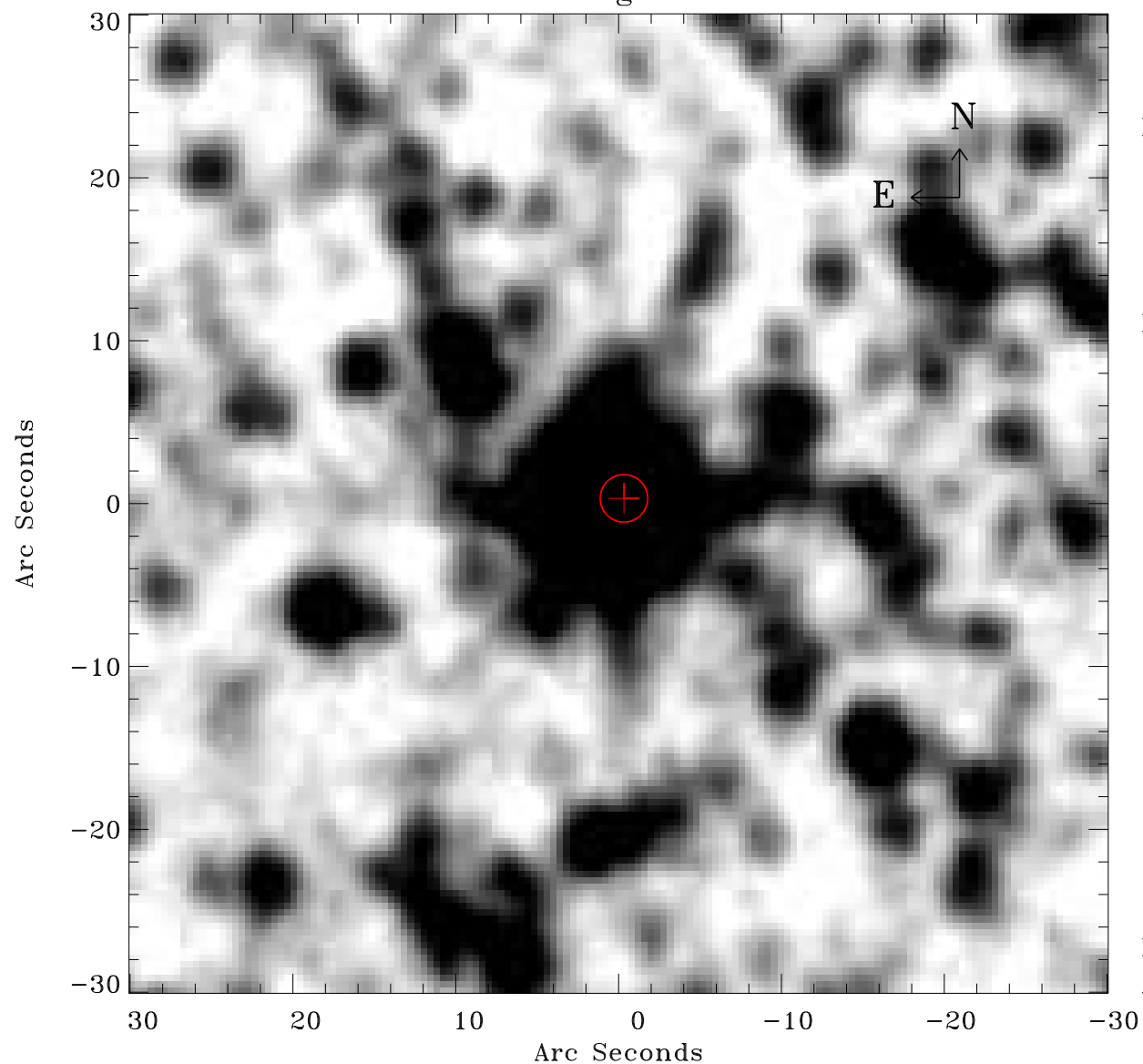


EPIC source finding chart ACDS V10.0



Principal Investigator :

Dr Frank Haberl

XMM target name :

LMC survey 25

OBS ID : 690742501

Source number : 6

X-ray coordinates :

α : 05 05 06.82

δ : -68 21 26.3

Center coordinates :

α : 05 05 06.81

δ : -68 21 26.2

Plate reference :

Origin : CDS HIPs Network

Plate : MAMA srcj

Pixel : 0.40 "/pix

Error circle :

R_{90} (") : 1.4

XMM SSC

Apr 28 15:48:00 2019