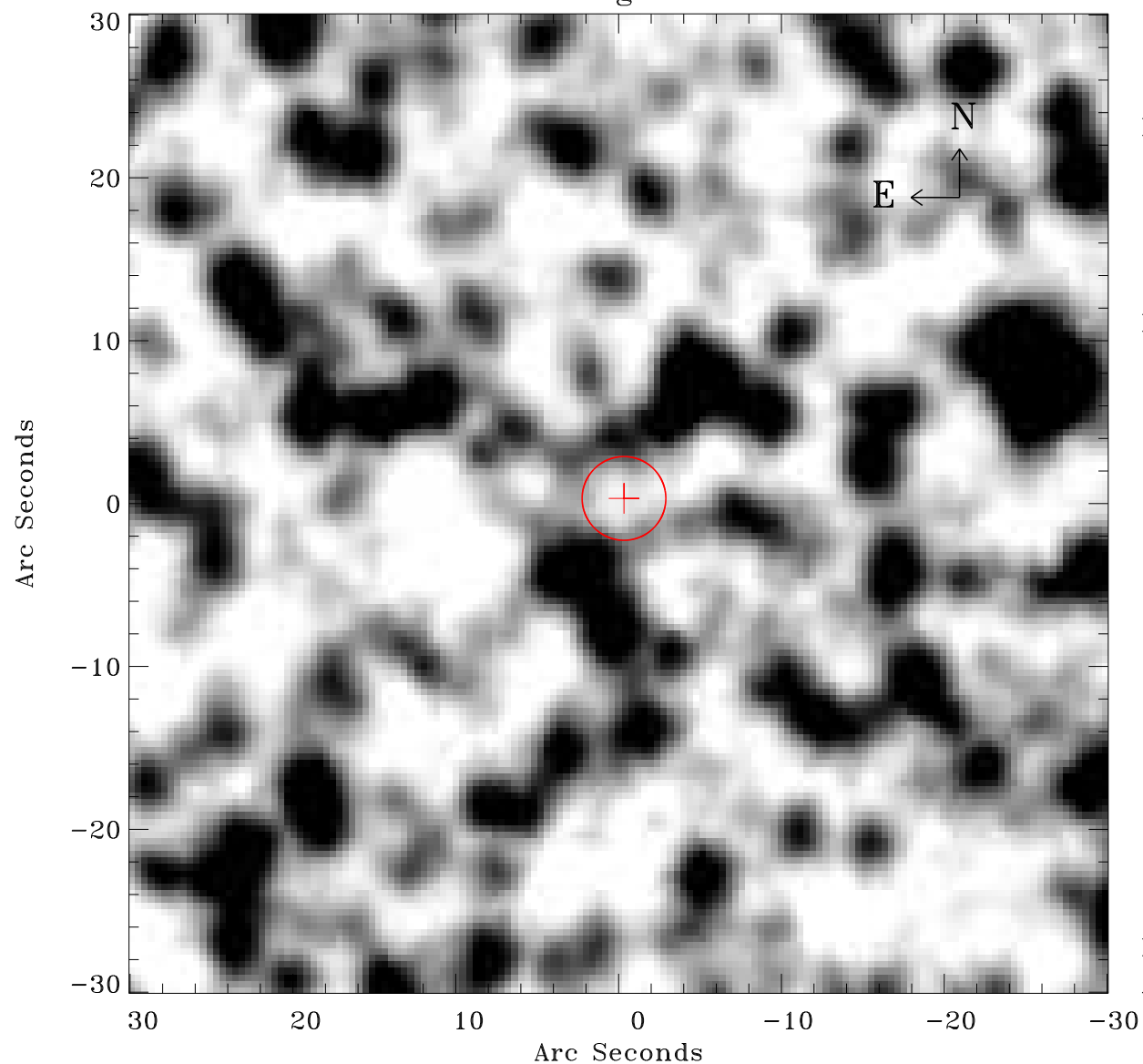


# EPIC source finding chart ACDS V10.0



Principal Investigator :

Dr Frank Haberl

XMM target name :

LMC survey 25

OBS ID : 690742501

Source number : 12

X-ray coordinates :

$\alpha$  : 05 07 49.25

$\delta$  : -68 09 40.5

Center coordinates :

$\alpha$  : 05 07 49.24

$\delta$  : -68 09 40.4

Plate reference :

Origin : CDS HIPs Network

Plate : MAMA srcj

Pixel : 0.40 "/pix

Error circle :

$R_{90}$  (") : 2.5

XMM SSC

Apr 28 15:51:45 2019