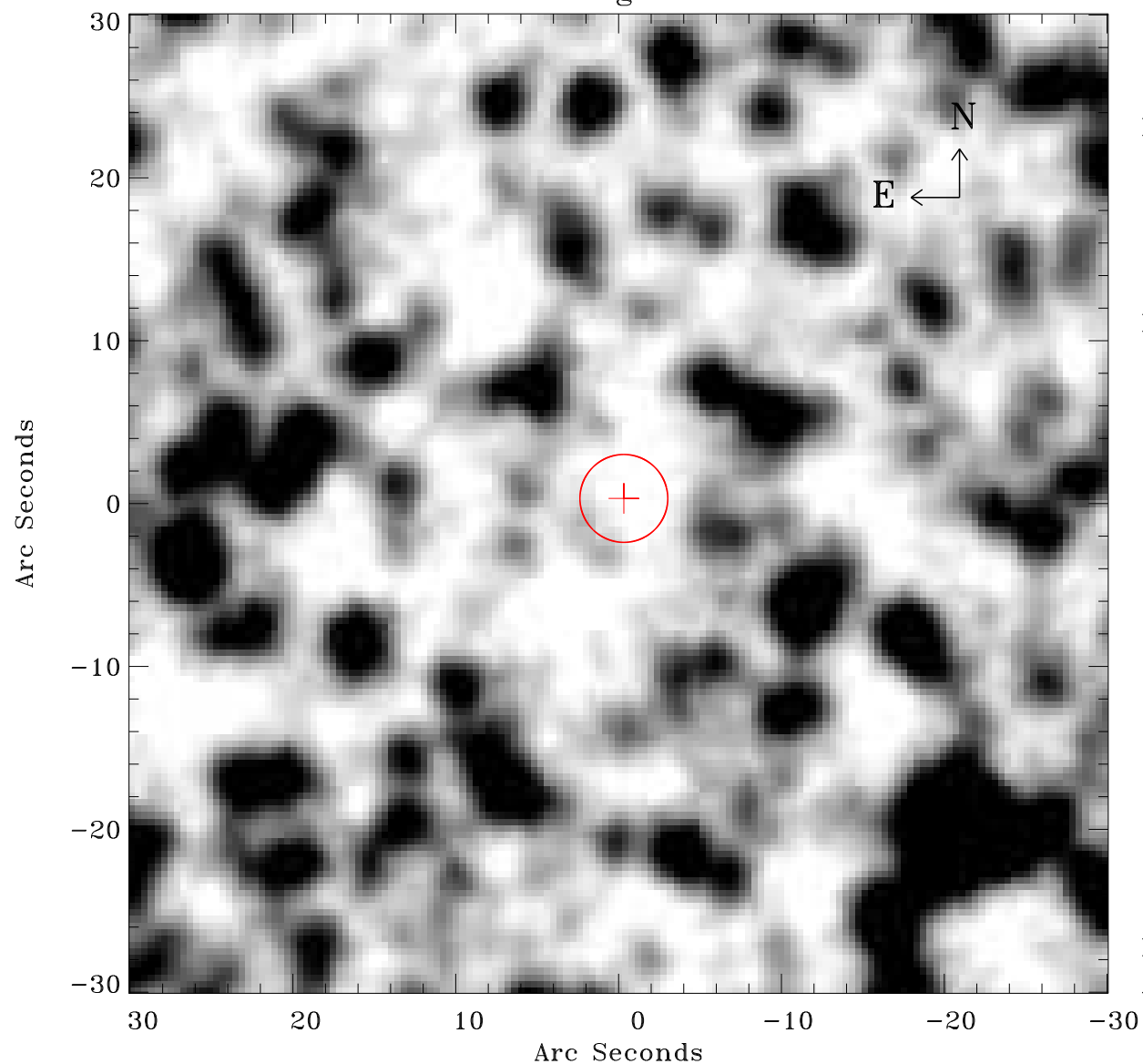


# EPIC source finding chart ACDS V10.0



Principal Investigator :

Dr Frank Haberl

XMM target name :

LMC survey 25

OBS ID : 690742501

Source number : 36

X-ray coordinates :

$\alpha$  : 05 04 45.44

$\delta$  : -68 21 04.5

Center coordinates :

$\alpha$  : 05 04 45.42

$\delta$  : -68 21 04.4

Plate reference :

Origin : CDS HIPs Network

Plate : MAMA srcj

Pixel : 0.40 "/pix

Error circle :

$R_{90}$  (") : 2.7

XMM SSC

Apr 28 15:47:33 2019