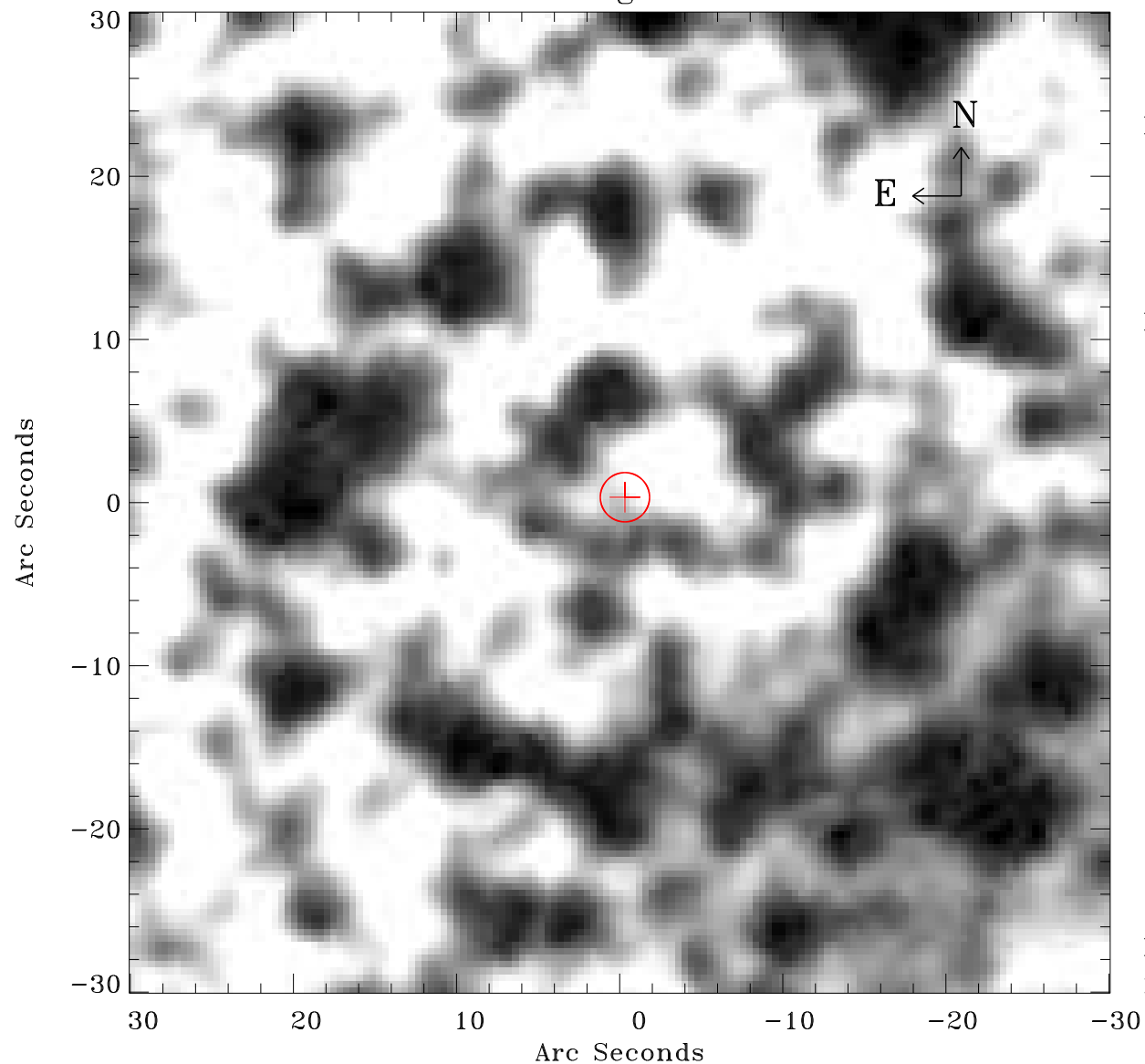


EPIC source finding chart ACDS V10.0



Principal Investigator :

Dr Frank Haberl

XMM target name :

LMC survey 51

OBS ID : 690750101

Source number : 20

X-ray coordinates :

α : 05 34 22.61

δ : -69 45 40.0

Center coordinates :

α : 05 34 22.59

δ : -69 45 39.9

Plate reference :

Origin : CDS HIPs Network

Plate : MAMA srcj

Pixel : 0.40 "/pix

Error circle :

R_{90} (") : 1.5

XMM SSC

May 2 21:58:13 2019