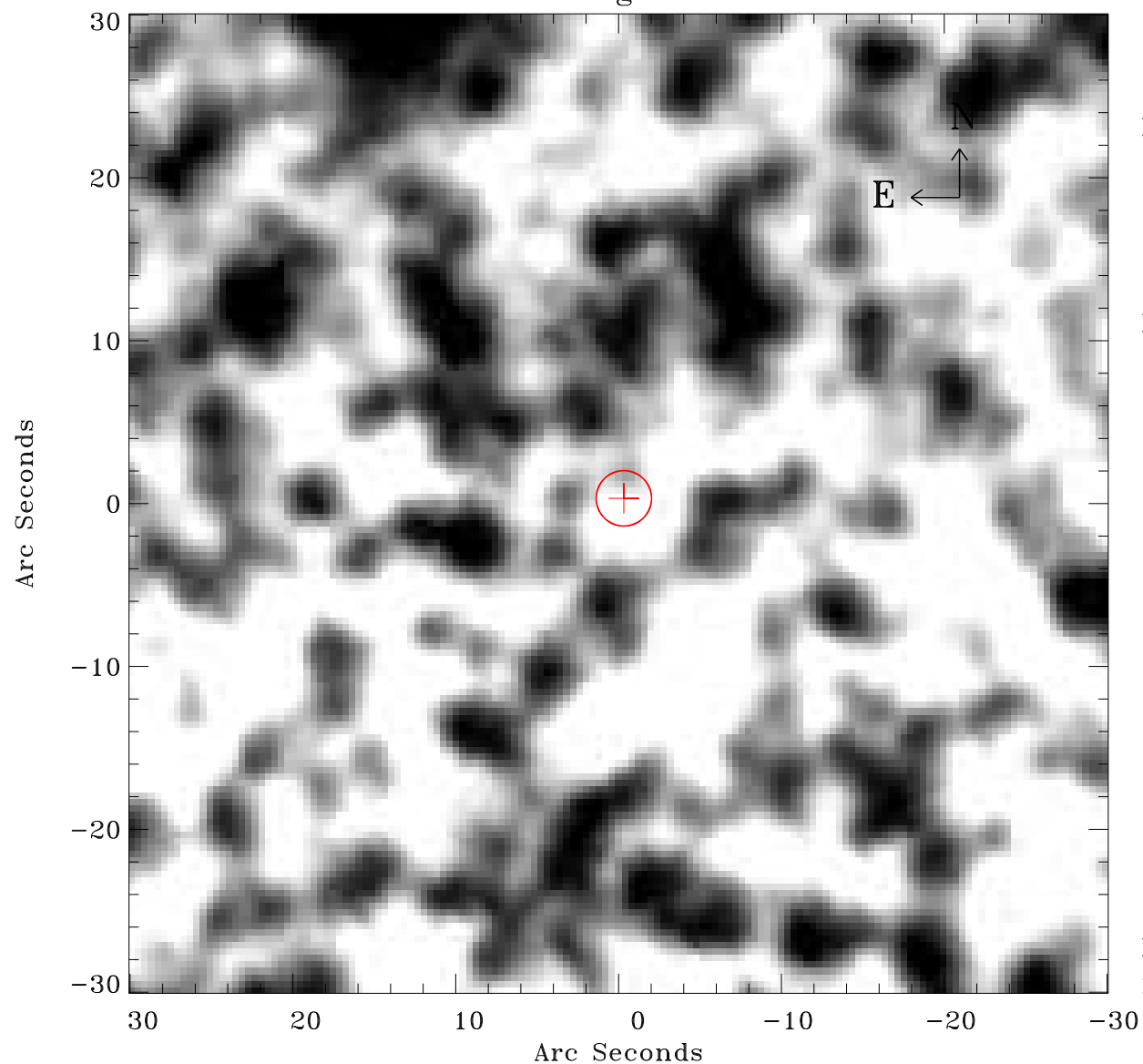


EPIC source finding chart ACDS V10.0



Principal Investigator :

Dr Frank Haberl

XMM target name :

LMC survey 51

OBS ID : 690750101

Source number : 21

X-ray coordinates :

α : 05 33 48.36

δ : -69 47 21.1

Center coordinates :

α : 05 33 48.34

δ : -69 47 21.0

Plate reference :

Origin : CDS HIPs Network

Plate : MAMA srcj

Pixel : 0.40 "/pix

Error circle :

R_{90} (") : 1.7

XMM SSC

May 2 21:57:51 2019