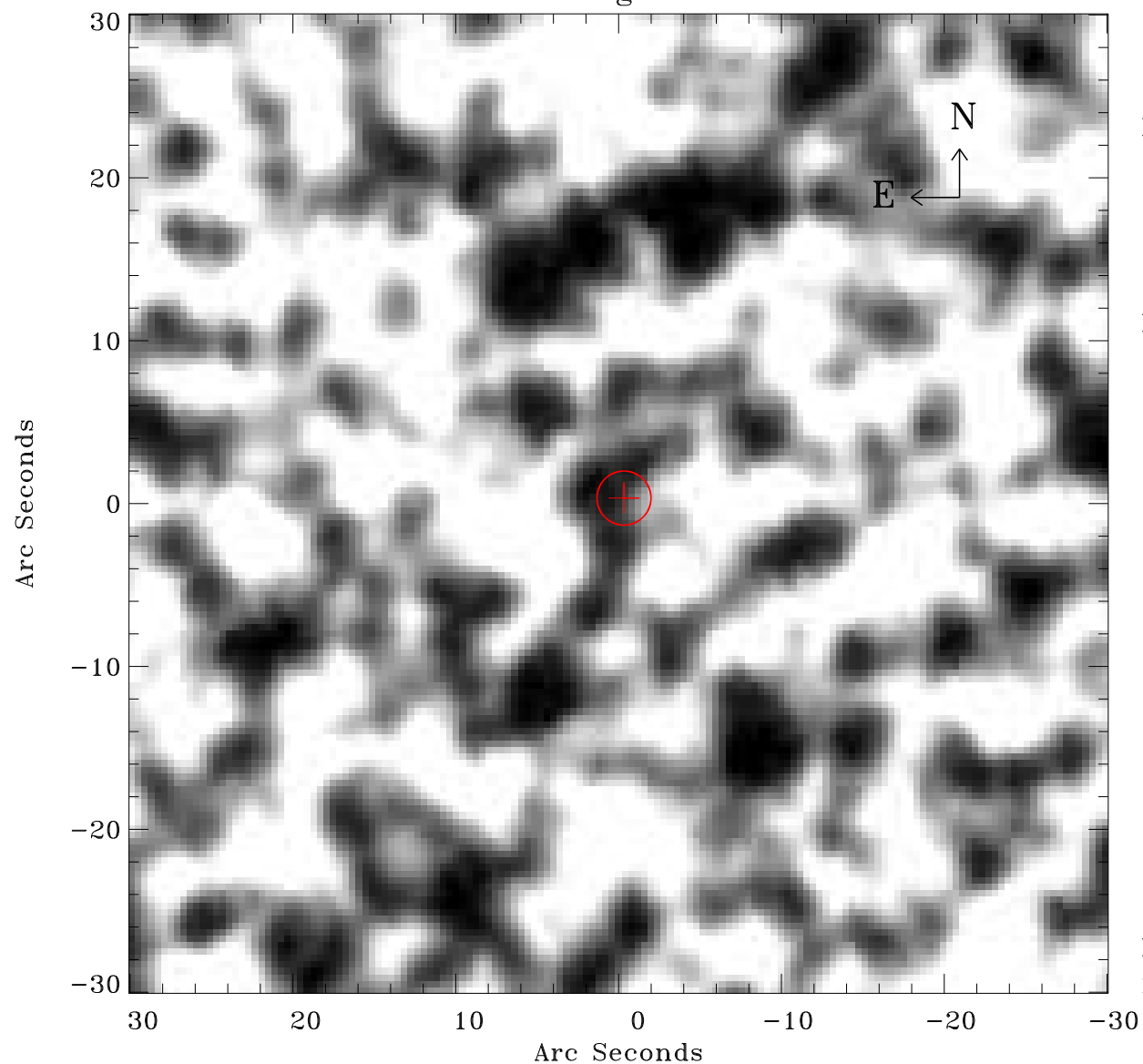


# EPIC source finding chart ACDS V10.0



Principal Investigator :

Dr Frank Haberl

XMM target name :

LMC survey 51

OBS ID : 690750101

Source number : 27

X-ray coordinates :

$\alpha$  : 05 33 04.00

$\delta$  : -69 51 59.7

Center coordinates :

$\alpha$  : 05 33 03.99

$\delta$  : -69 51 59.7

Plate reference :

Origin : CDS HIPs Network

Plate : MAMA srcj

Pixel : 0.40 "/pix

Error circle :

$R_{90}$  (") : 1.6

XMM SSC

May 2 21:57:33 2019