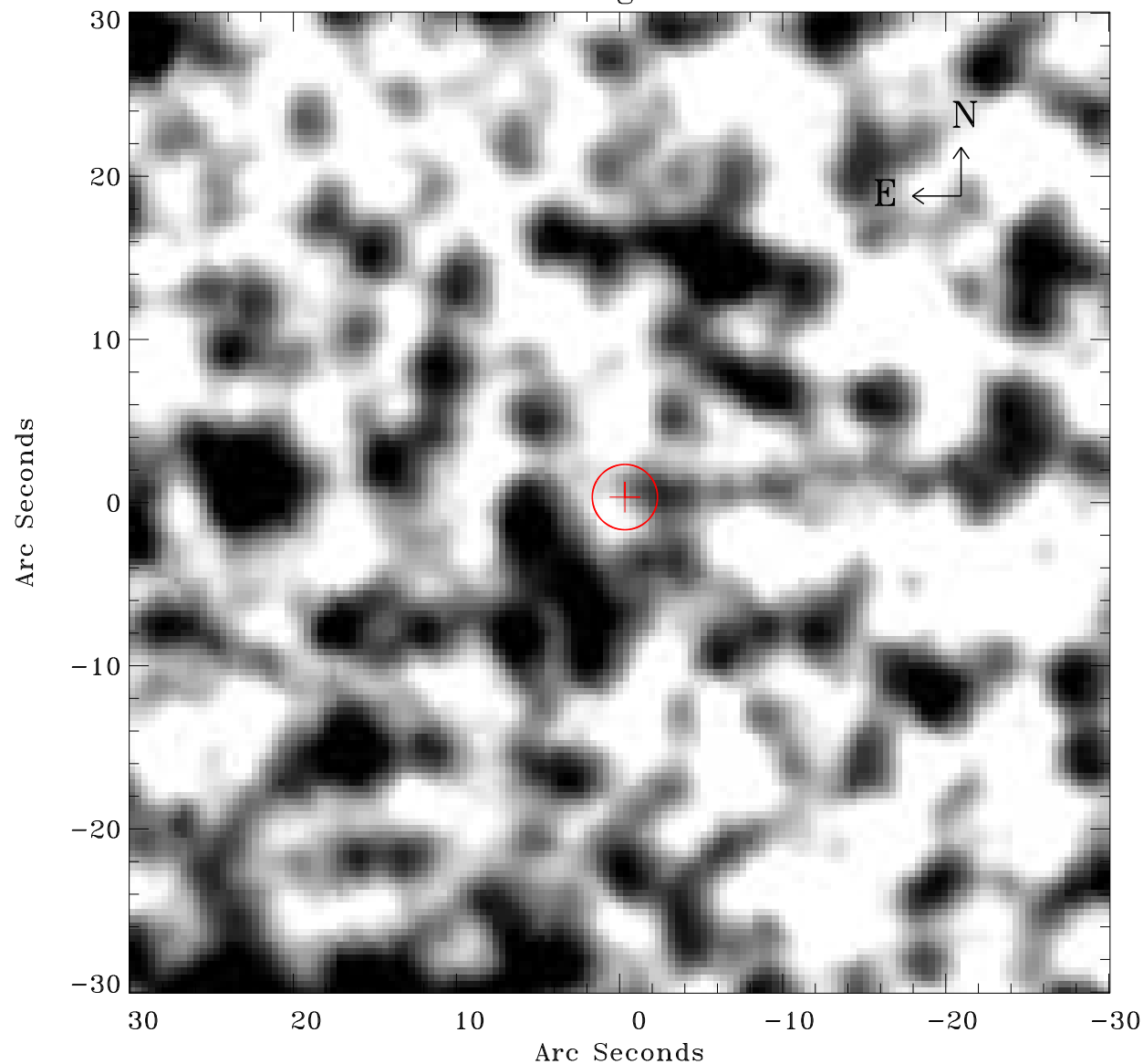


EPIC source finding chart ACDS V10.0



Principal Investigator :

Dr Frank Haberl

XMM target name :

LMC survey 51

OBS ID : 690750101

Source number : 40

X-ray coordinates :

α : 05 34 24.90

δ : -69 41 20.3

Center coordinates :

α : 05 34 24.89

δ : -69 41 20.3

Plate reference :

Origin : CDS HIPs Network

Plate : MAMA srcj

Pixel : 0.40 "/pix

Error circle :

R_{90} (") : 2.0

XMM SSC

May 2 21:58:14 2019