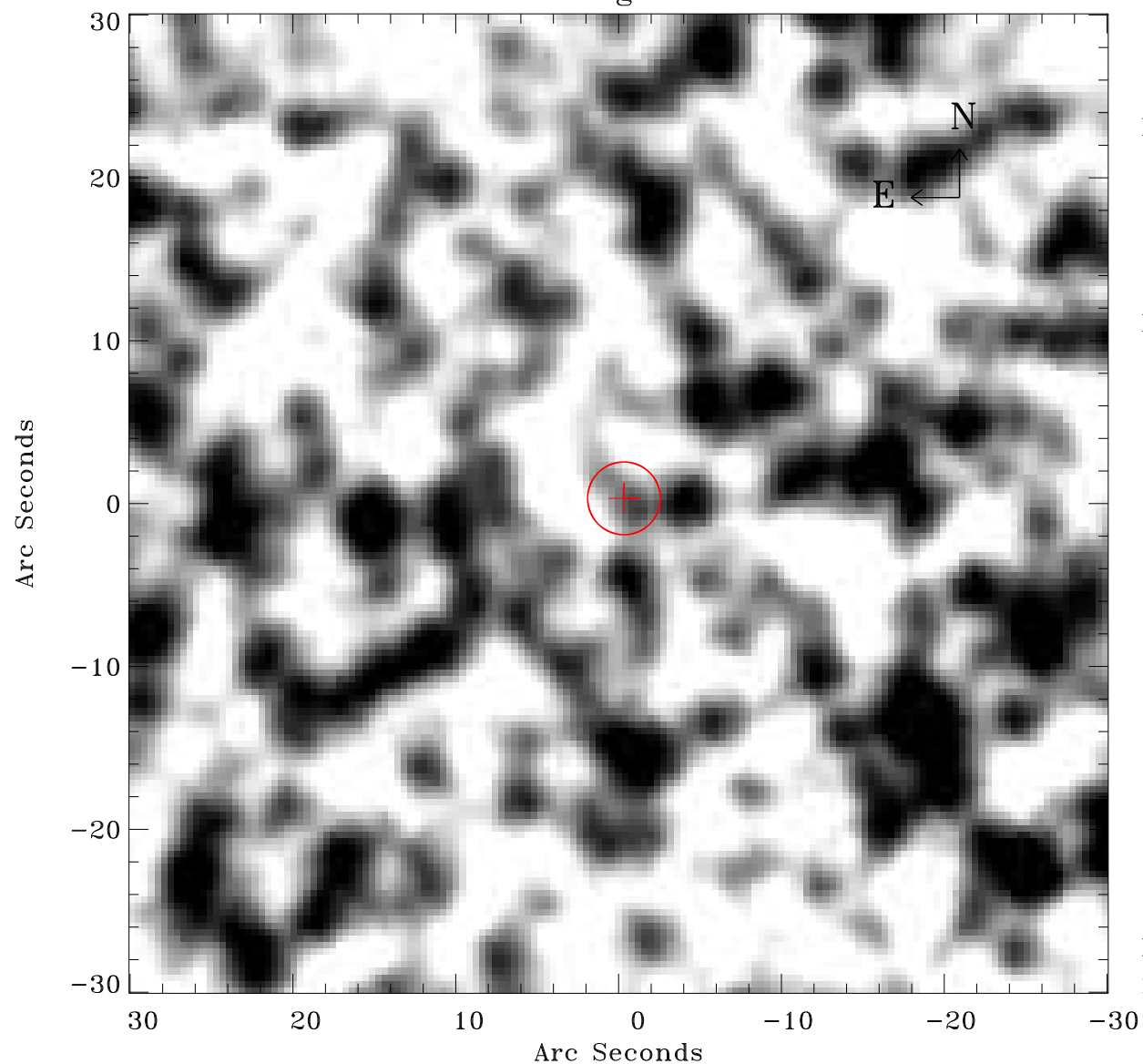


EPIC source finding chart ACDS V10.0



Principal Investigator :

Dr Frank Haberl

XMM target name :

LMC survey 51

OBS ID : 690750101

Source number : 46

X-ray coordinates :

α : 05 36 15.48

δ : -69 44 02.6

Center coordinates :

α : 05 36 15.47

δ : -69 44 02.5

Plate reference :

Origin : CDS HIPs Network

Plate : MAMA srcj

Pixel : 0.40 "/pix

Error circle :

R_{90} (") : 2.2

XMM SSC

May 2 21:59:25 2019