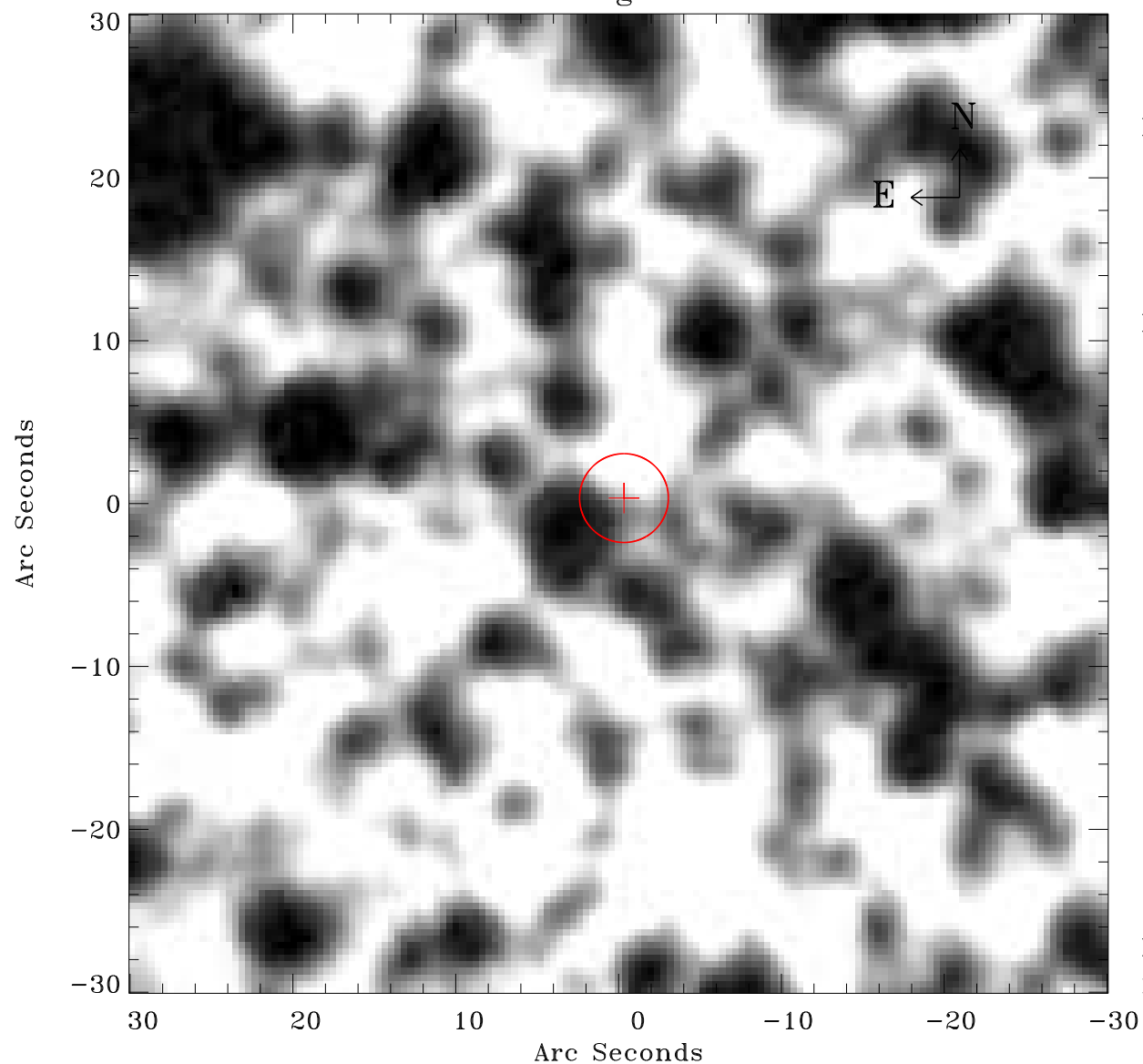


EPIC source finding chart ACDS V10.0



Principal Investigator :

Dr Frank Haberl

XMM target name :

LMC survey 51

OBS ID : 690750101

Source number : 50

X-ray coordinates :

α : 05 35 46.44

δ : -69 43 50.6

Center coordinates :

α : 05 35 46.42

δ : -69 43 50.6

Plate reference :

Origin : CDS HIPs Network

Plate : MAMA srcj

Pixel : 0.40 "/pix

Error circle :

R_{90} (") : 2.7

XMM SSC

May 2 21:58:53 2019