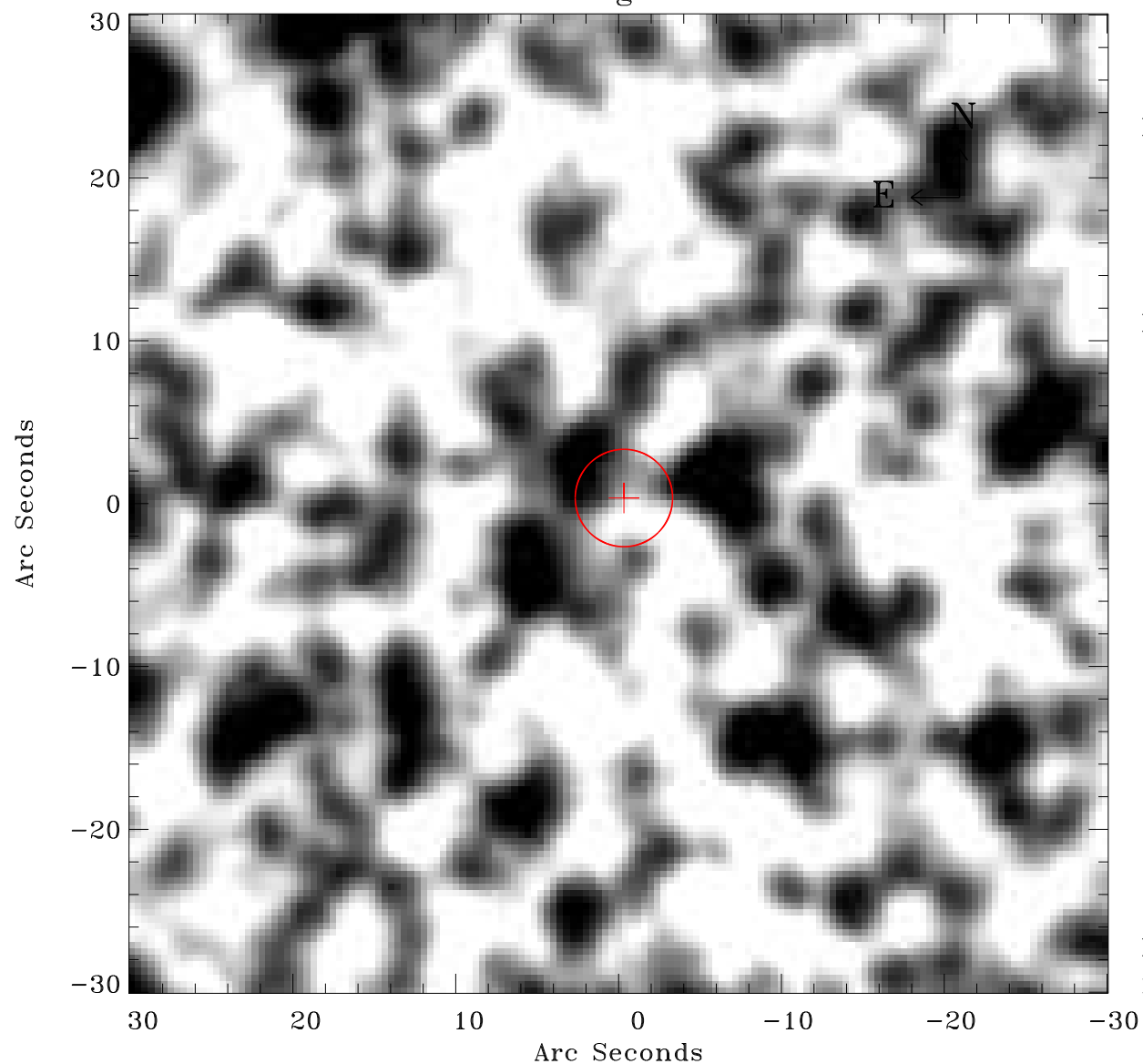


# EPIC source finding chart ACDS V10.0



Principal Investigator :

Dr Frank Haberl

XMM target name :

LMC survey 51

OBS ID : 690750101

Source number : 84

X-ray coordinates :

$\alpha$  : 05 35 27.71

$\delta$  : -69 51 02.7

Center coordinates :

$\alpha$  : 05 35 27.69

$\delta$  : -69 51 02.6

Plate reference :

Origin : CDS HIPs Network

Plate : MAMA srcj

Pixel : 0.40 "/pix

Error circle :

$R_{90}$  (") : 3.0

XMM SSC

May 2 21:58:39 2019