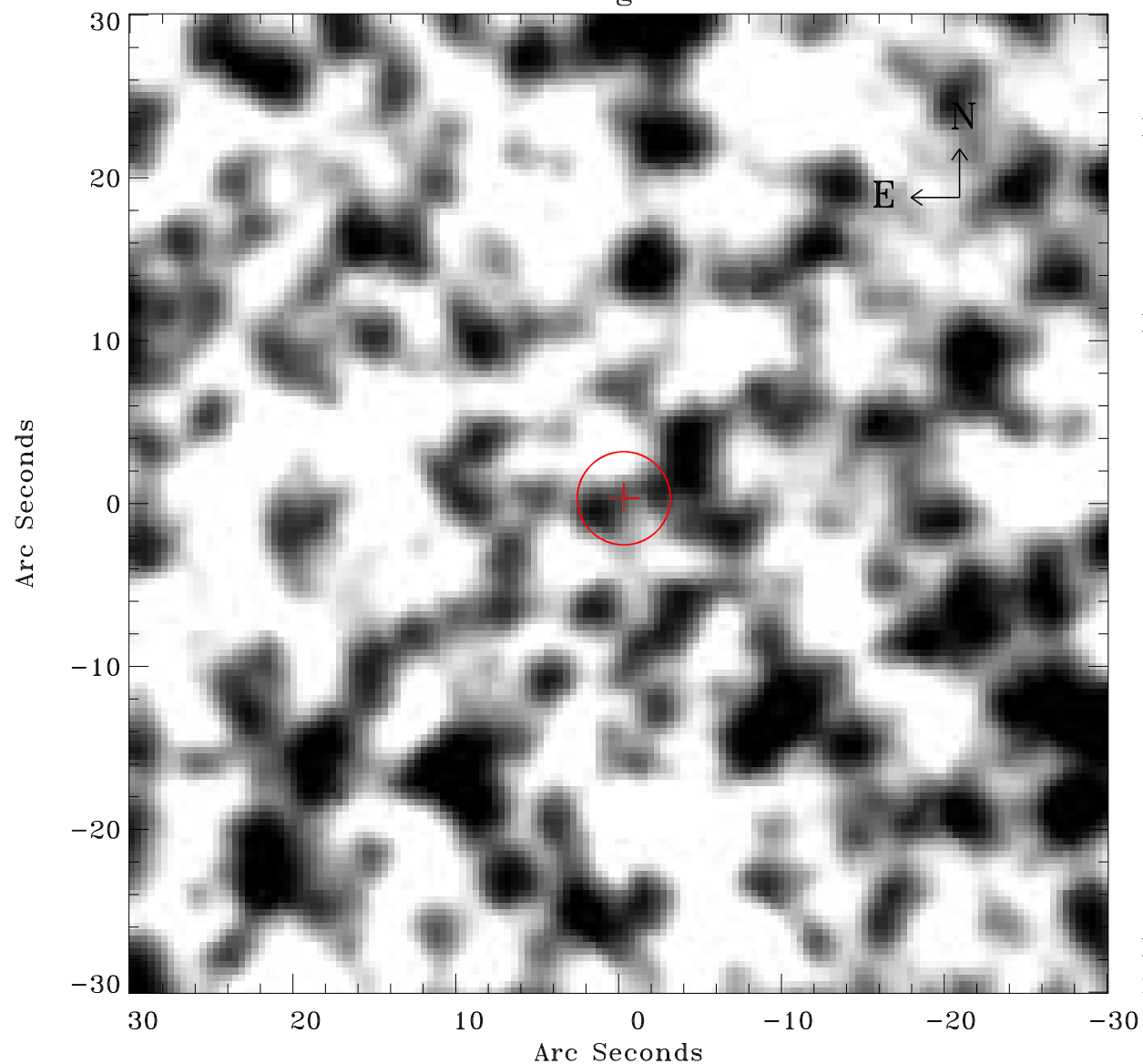


# EPIC source finding chart ACDS V10.0



Principal Investigator :

Dr Frank Haberl

XMM target name :

LMC survey 51

OBS ID : 690750101

Source number : 90

X-ray coordinates :

$\alpha$  : 05 35 24.53

$\delta$  : -69 50 44.3

Center coordinates :

$\alpha$  : 05 35 24.52

$\delta$  : -69 50 44.2

Plate reference :

Origin : CDS HIPs Network

Plate : MAMA srcj

Pixel : 0.40 "/pix

Error circle :

$R_{90}$  (") : 2.8

XMM SSC

May 2 21:58:33 2019