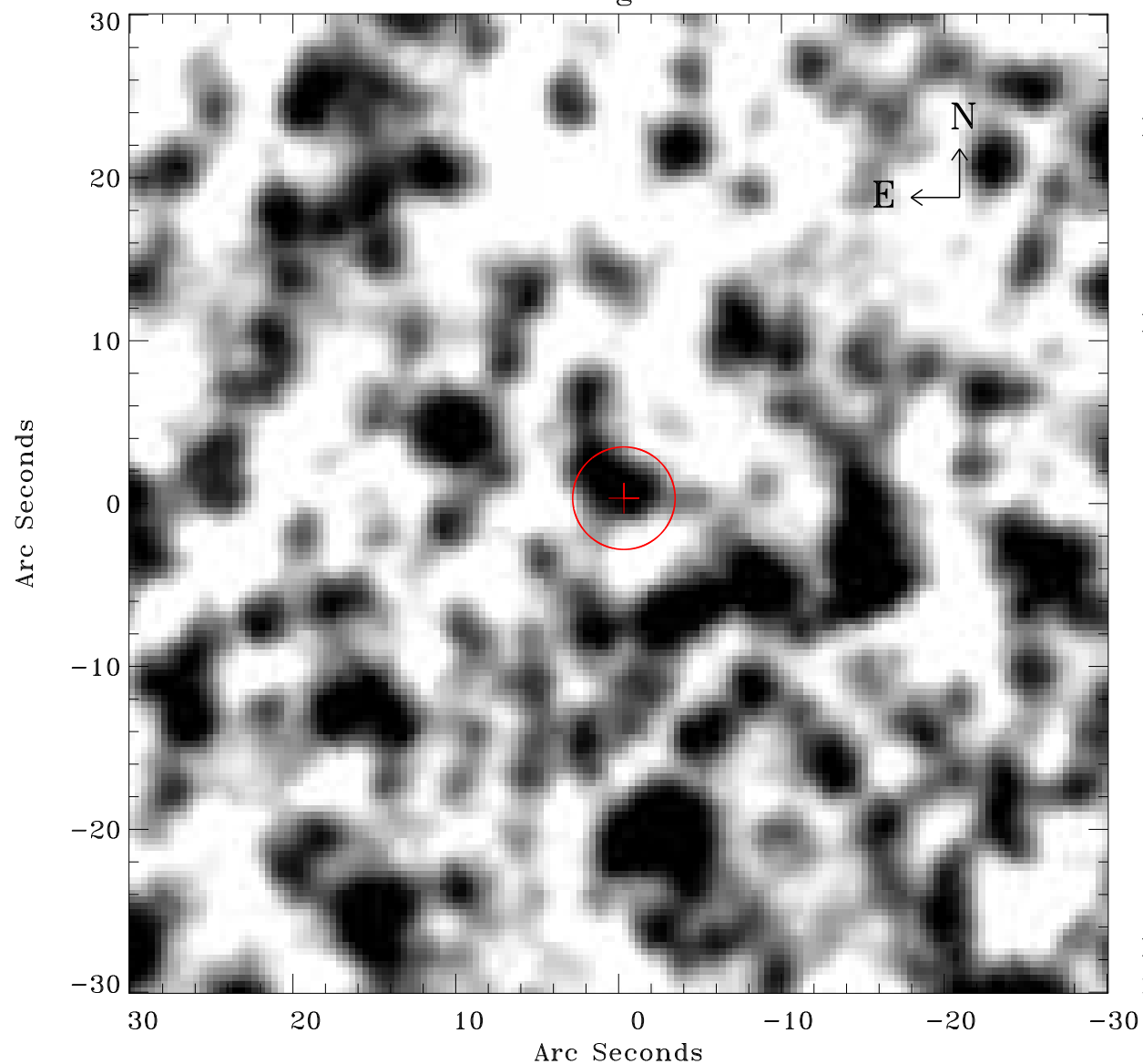


EPIC source finding chart ACDS V10.0



Principal Investigator :

Dr Frank Haberl

XMM target name :

LMC survey 51

OBS ID : 690750101

Source number : 94

X-ray coordinates :

α : 05 35 09.23

δ : -69 46 31.9

Center coordinates :

α : 05 35 09.21

δ : -69 46 31.8

Plate reference :

Origin : CDS HIPs Network

Plate : MAMA srcj

Pixel : 0.40 "/pix

Error circle :

R_{90} (") : 3.1

XMM SSC

May 2 21:58:26 2019