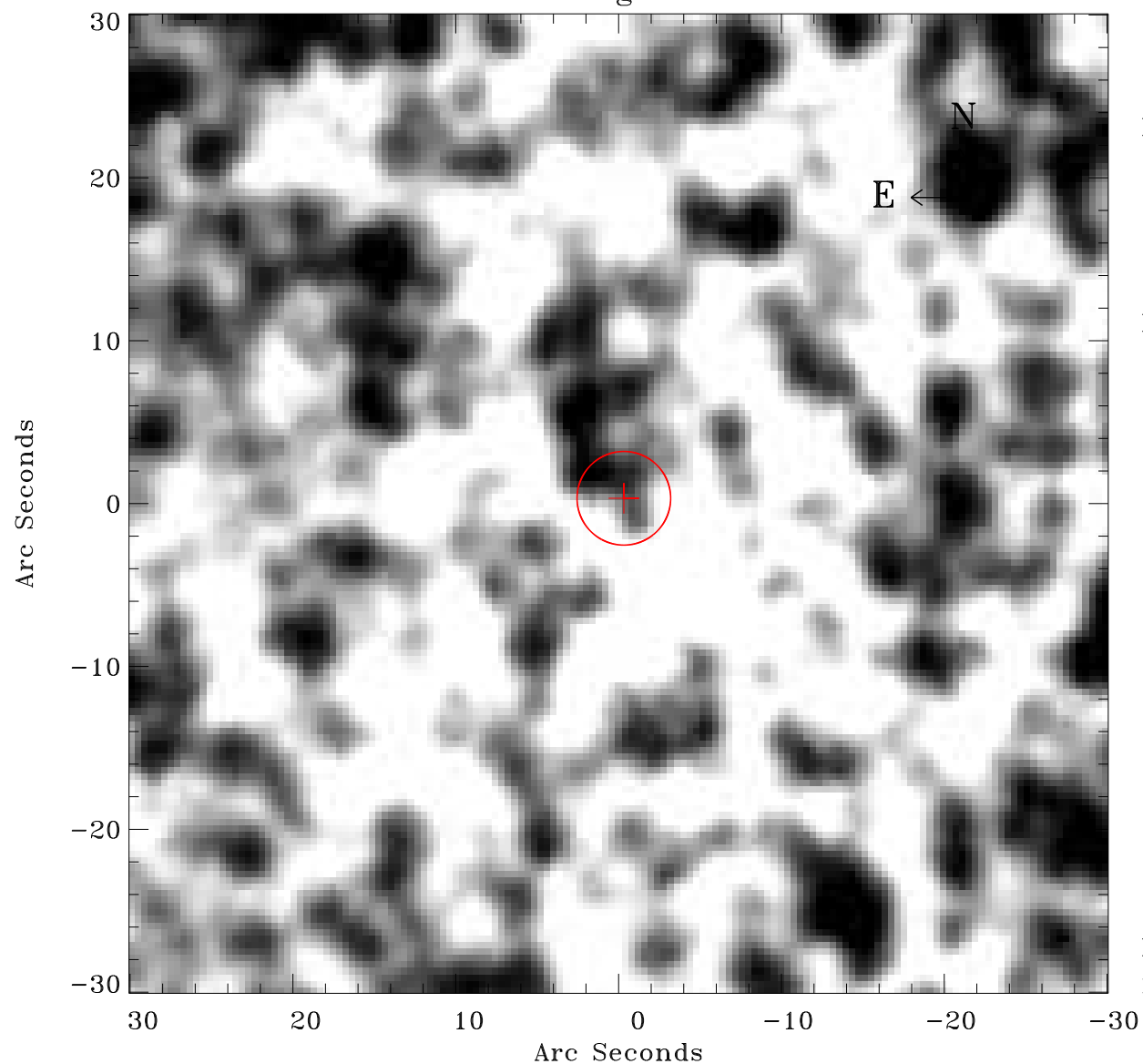


# EPIC source finding chart ACDS V10.0



Principal Investigator :

Dr Frank Haberl

XMM target name :

LMC survey 51

OBS ID : 690750101

Source number : 95

X-ray coordinates :

$\alpha$  : 05 34 45.11

$\delta$  : -69 48 56.5

Center coordinates :

$\alpha$  : 05 34 45.10

$\delta$  : -69 48 56.5

Plate reference :

Origin : CDS HIPs Network

Plate : MAMA srcj

Pixel : 0.40 "/pix

Error circle :

$R_{90}$  (") : 2.8

XMM SSC

May 2 21:58:20 2019