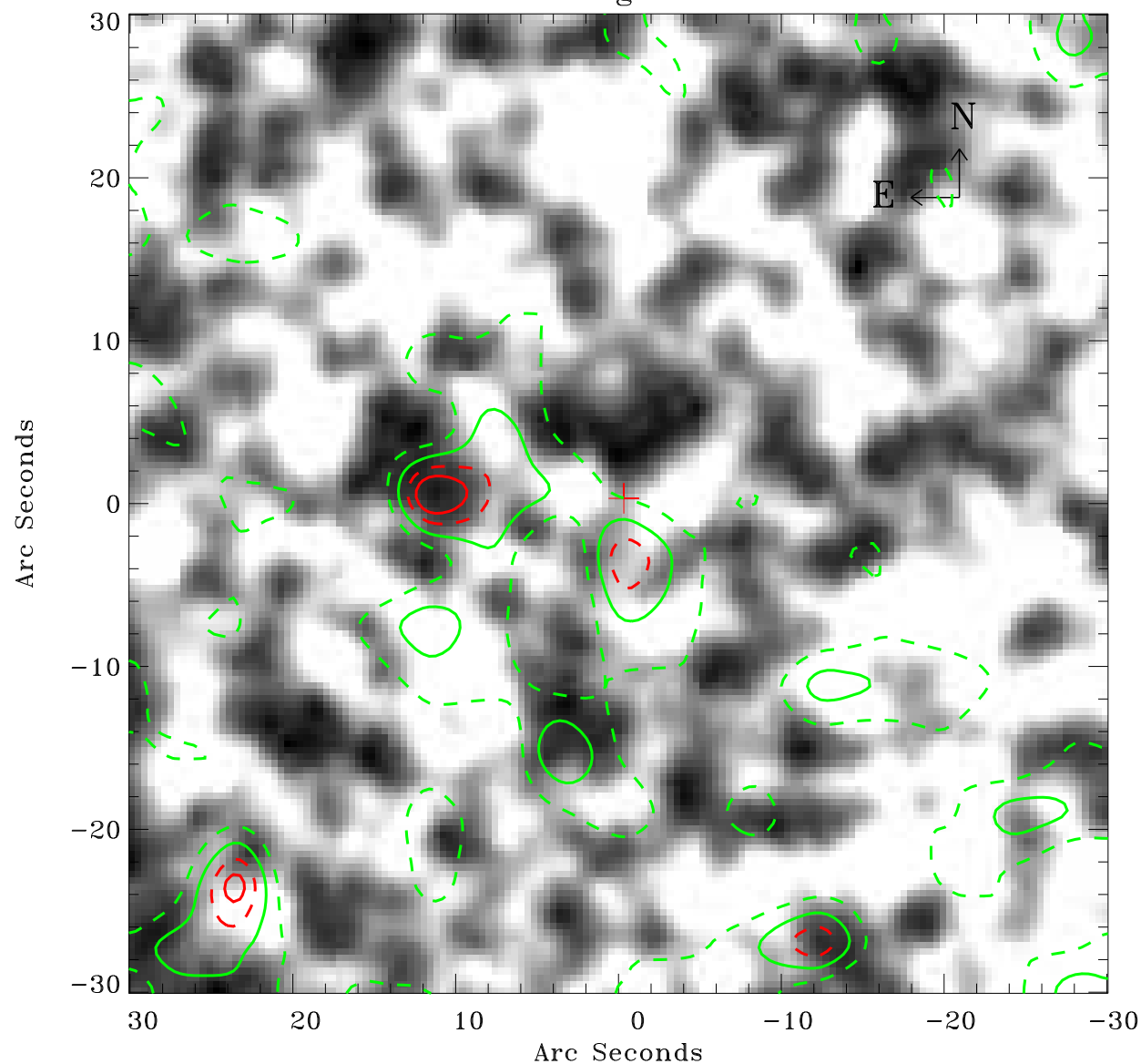


EPIC source finding chart ACDS V10.0



Principal Investigator :

Dr Frank Haberl

XMM target name :

LMC survey 51

OBS ID : 690750101

Source number : 102

X-ray coordinates :

α : 05 31 37.32

δ : -69 52 21.2

Center coordinates :

α : 05 31 37.30

δ : -69 52 21.1

Plate reference :

Origin : CDS HIPs Network

Plate : MAMA srcj

Pixel : 0.40 "/pix

Contour levels (counts) :

2.94E+00 4.30E+00

5.57E+00 6.63E+00

XMM SSC

May 2 21:57:17 2019