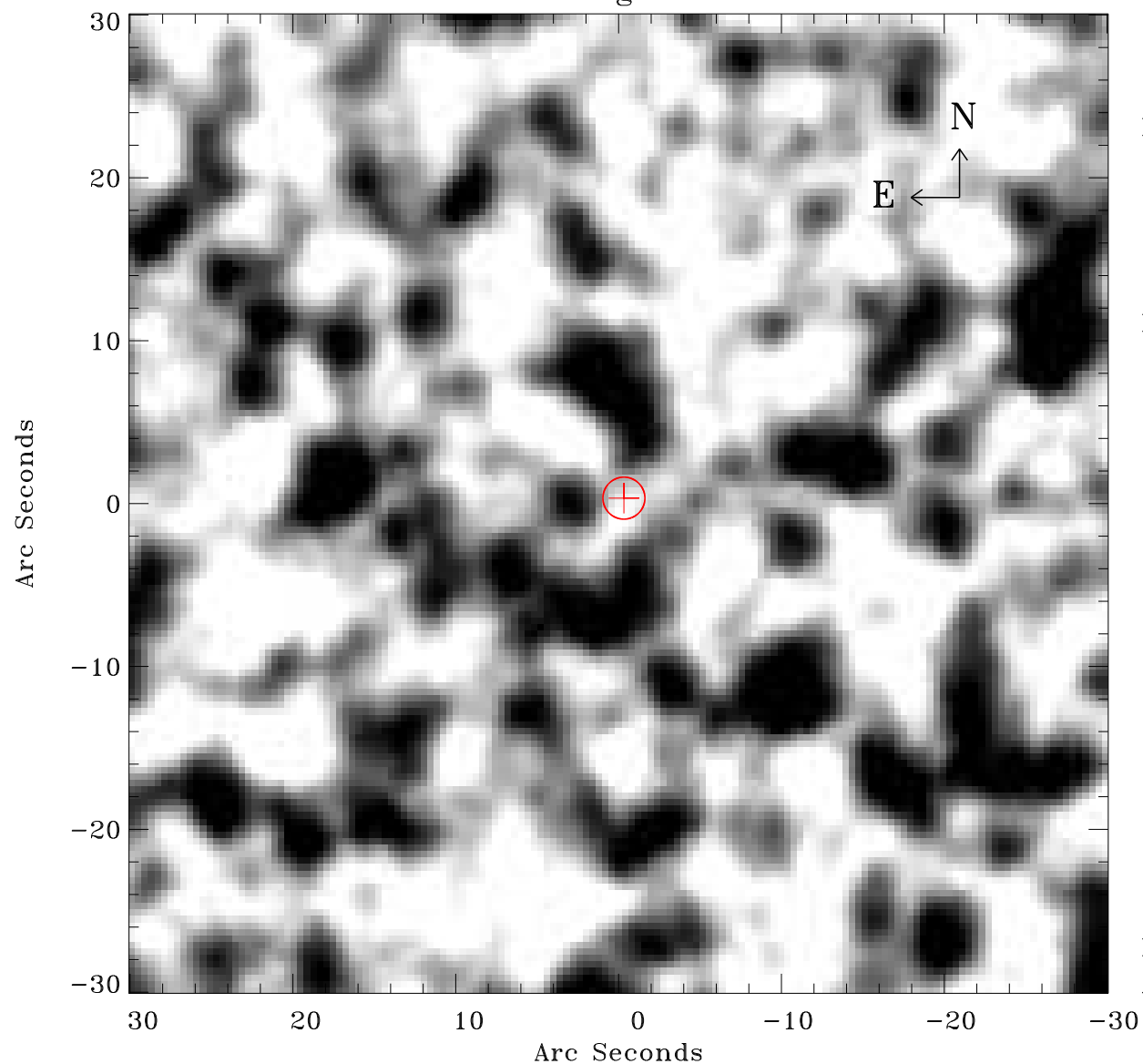


# EPIC source finding chart ACDS V10.0



Principal Investigator :

Dr Frank Haberl

XMM target name :

LMC survey 60

OBS ID : 690751001

Source number : 2

X-ray coordinates :

$\alpha$  : 05 21 54.29

$\delta$  : -70 04 46.1

Center coordinates :

$\alpha$  : 05 21 54.28

$\delta$  : -70 04 46.0

Plate reference :

Origin : CDS HIPs Network

Plate : MAMA srcj

Pixel : 0.40 "/pix

Error circle :

$R_{90}$  (") : 1.3

XMM SSC

Apr 27 13:12:56 2019