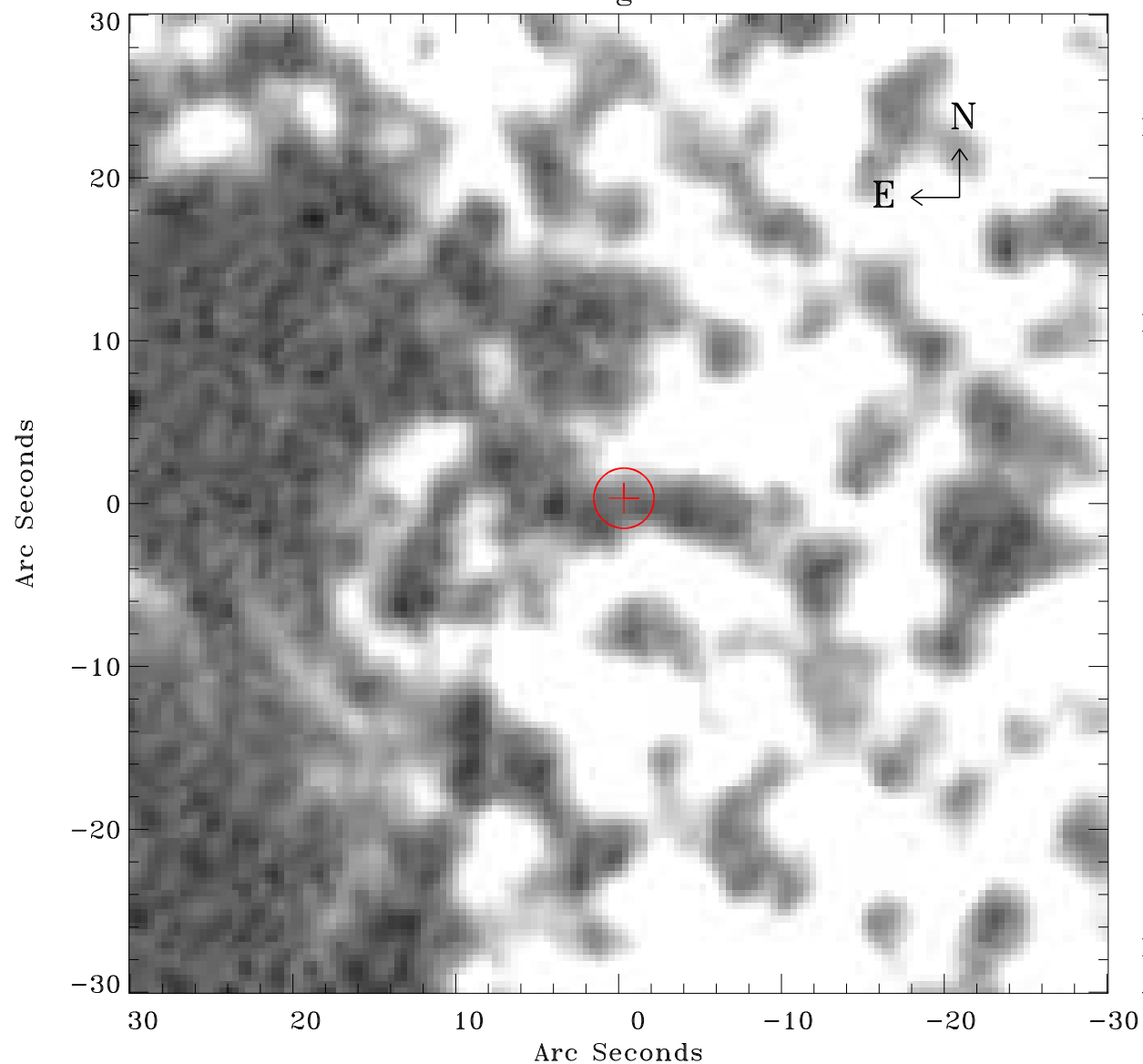


# EPIC source finding chart ACDS V10.0



Principal Investigator :

Dr Frank Haberl

XMM target name :

LMC survey 60

OBS ID : 690751001

Source number : 19

X-ray coordinates :

$\alpha$  : 05 21 19.59

$\delta$  : -69 56 34.7

Center coordinates :

$\alpha$  : 05 21 19.58

$\delta$  : -69 56 34.7

Plate reference :

Origin : CDS HIPs Network

Plate : MAMA srcj

Pixel : 0.40 "/pix

Error circle :

$R_{90}$  (") : 1.8

XMM SSC

Apr 27 13:11:22 2019