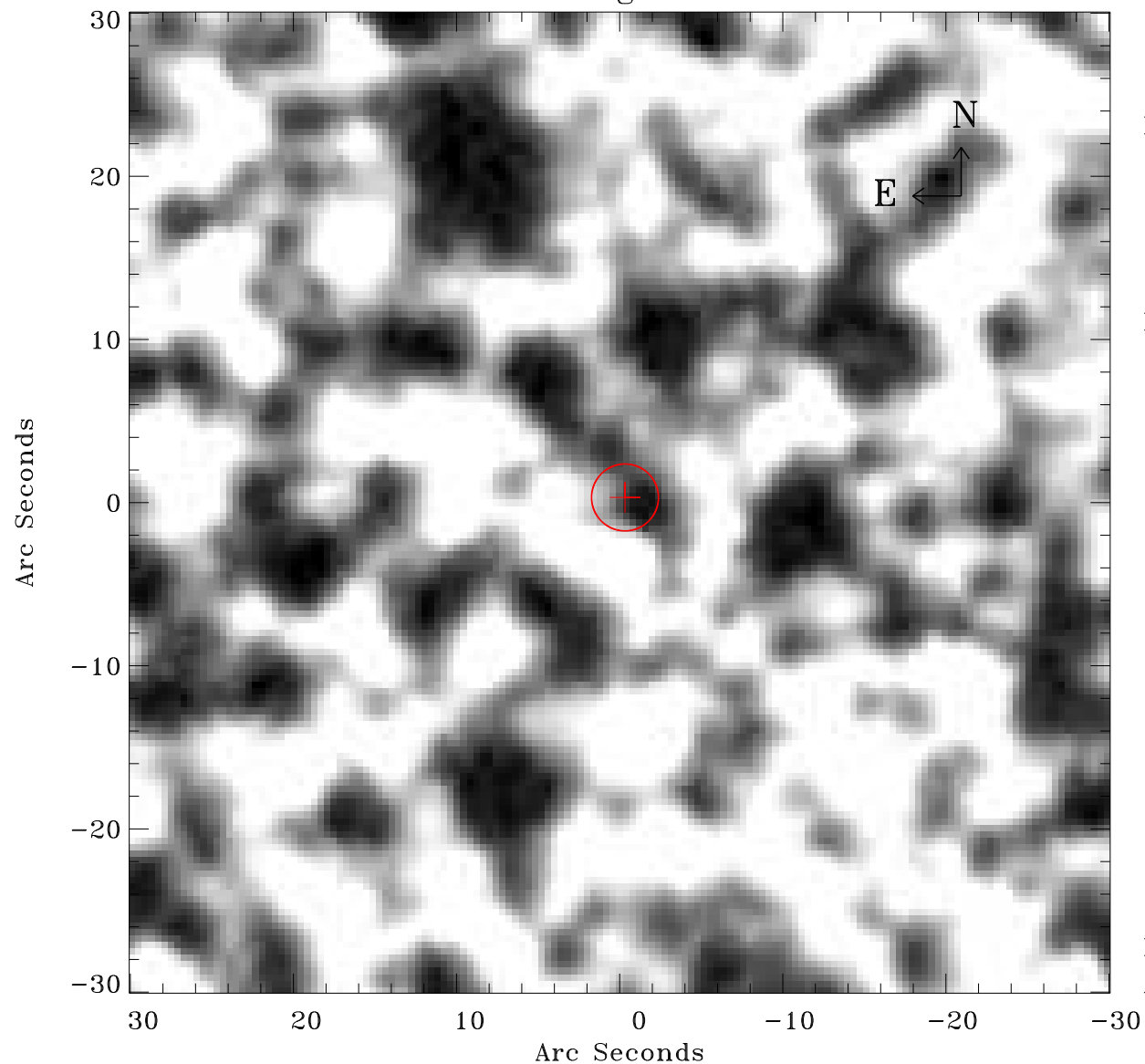


# EPIC source finding chart ACDS V10.0



Principal Investigator :

Dr Frank Haberl

XMM target name :

LMC survey 60

OBS ID : 690751001

Source number : 47

X-ray coordinates :

$\alpha$  : 05 22 59.70

$\delta$  : -69 56 57.9

Center coordinates :

$\alpha$  : 05 22 59.69

$\delta$  : -69 56 57.8

Plate reference :

Origin : CDS HIPs Network

Plate : MAMA srcj

Pixel : 0.40 "/pix

Error circle :

$R_{90}$  (") : 2.0

XMM SSC

Apr 27 13:15:36 2019