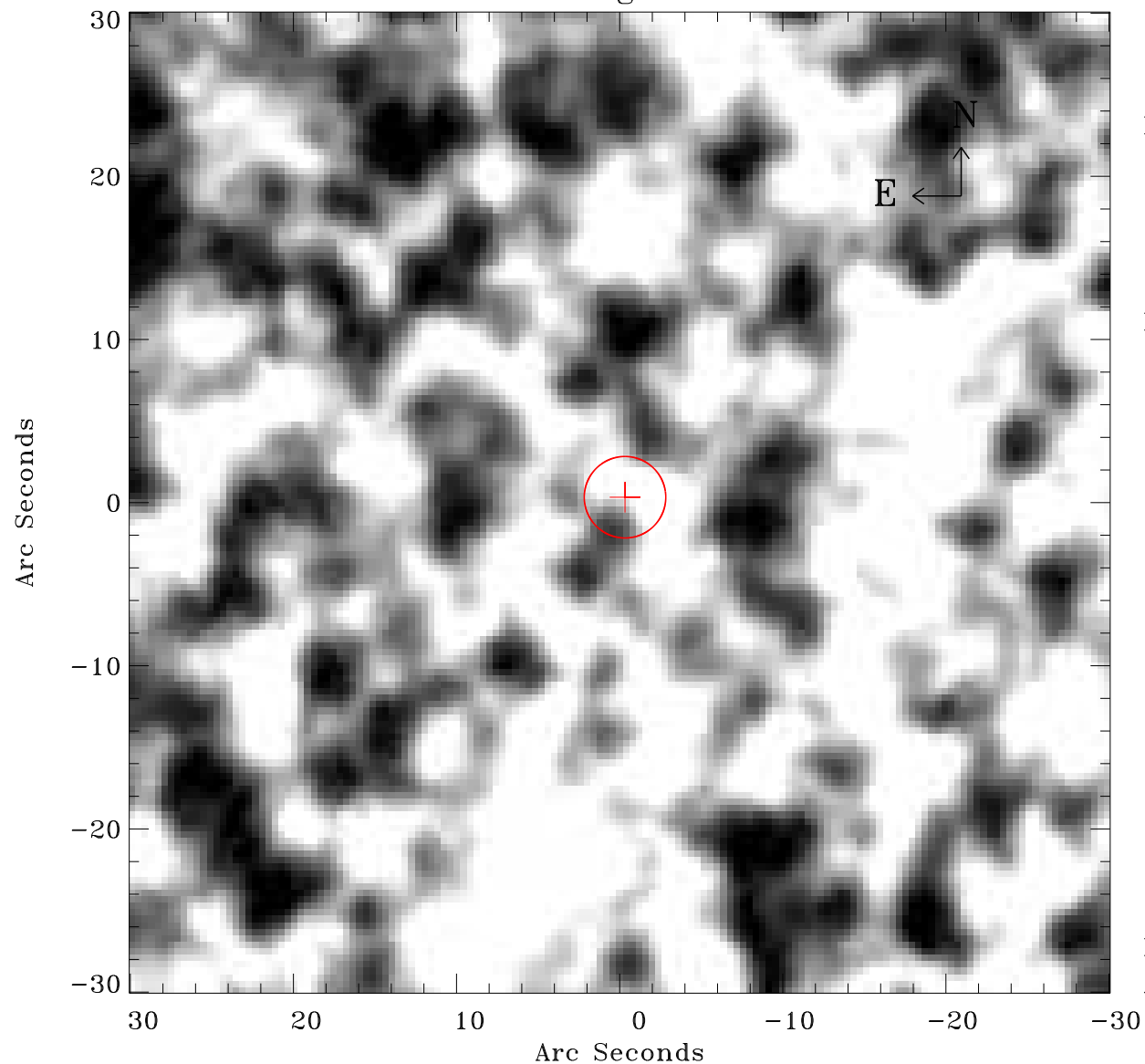


# EPIC source finding chart ACDS V10.0



Principal Investigator :

Dr Frank Haberl

XMM target name :

LMC survey 60

OBS ID : 690751001

Source number : 52

X-ray coordinates :

$\alpha$  : 05 22 12.13

$\delta$  : -69 48 24.2

Center coordinates :

$\alpha$  : 05 22 12.11

$\delta$  : -69 48 24.1

Plate reference :

Origin : CDS HIPs Network

Plate : MAMA srcj

Pixel : 0.40 "/pix

Error circle :

$R_{90}$  (") : 2.5

XMM SSC

Apr 27 13:13:49 2019