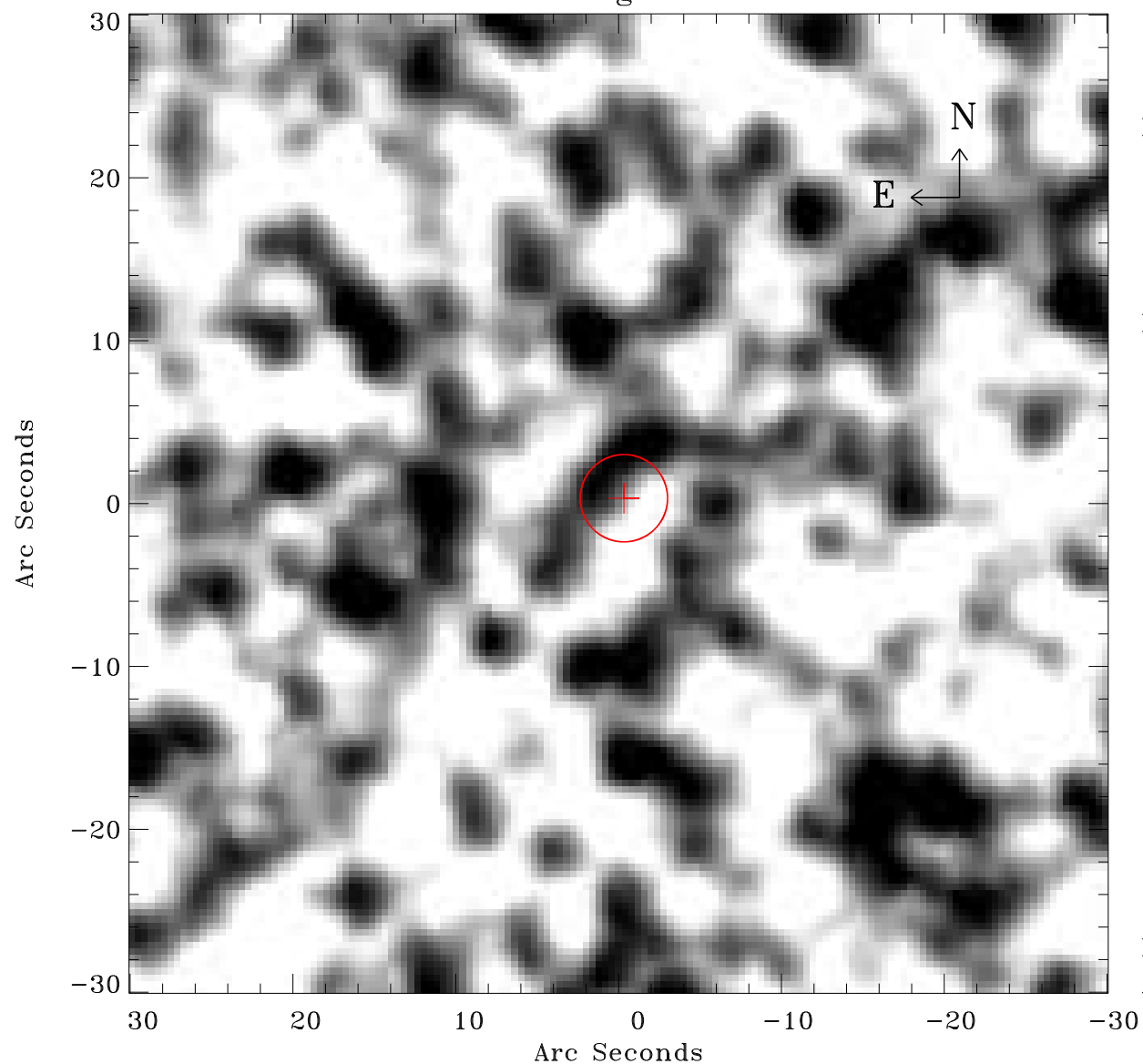


# EPIC source finding chart ACDS V10.0



Principal Investigator :

Dr Frank Haberl

XMM target name :

LMC survey 60

OBS ID : 690751001

Source number : 63

X-ray coordinates :

$\alpha$  : 05 21 07.59

$\delta$  : -70 05 44.8

Center coordinates :

$\alpha$  : 05 21 07.58

$\delta$  : -70 05 44.8

Plate reference :

Origin : CDS HIPs Network

Plate : MAMA srcj

Pixel : 0.40 "/pix

Error circle :

$R_{90}$  (") : 2.7

XMM SSC

Apr 27 13:10:40 2019