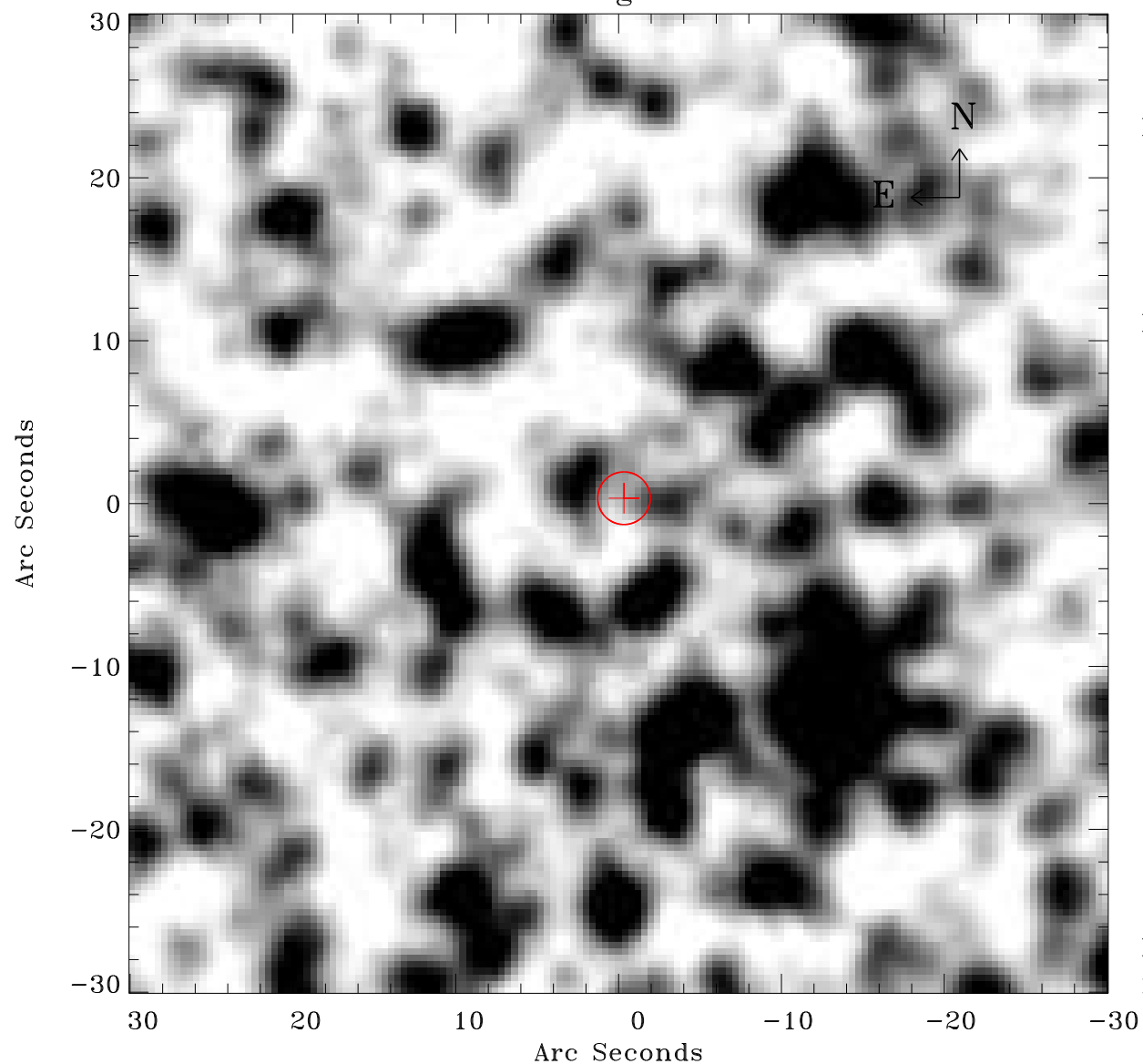


EPIC source finding chart ACDS V10.0



Principal Investigator :

Dr Frank Haberl

XMM target name :

LMC survey 61

OBS ID : 690751101

Source number : 28

X-ray coordinates :

α : 05 30 57.71

δ : -70 45 14.9

Center coordinates :

α : 05 30 57.70

δ : -70 45 14.8

Plate reference :

Origin : CDS HIPs Network

Plate : MAMA srcj

Pixel : 0.40 "/pix

Error circle :

R_{90} (") : 1.6

XMM SSC

May 3 19:34:33 2019