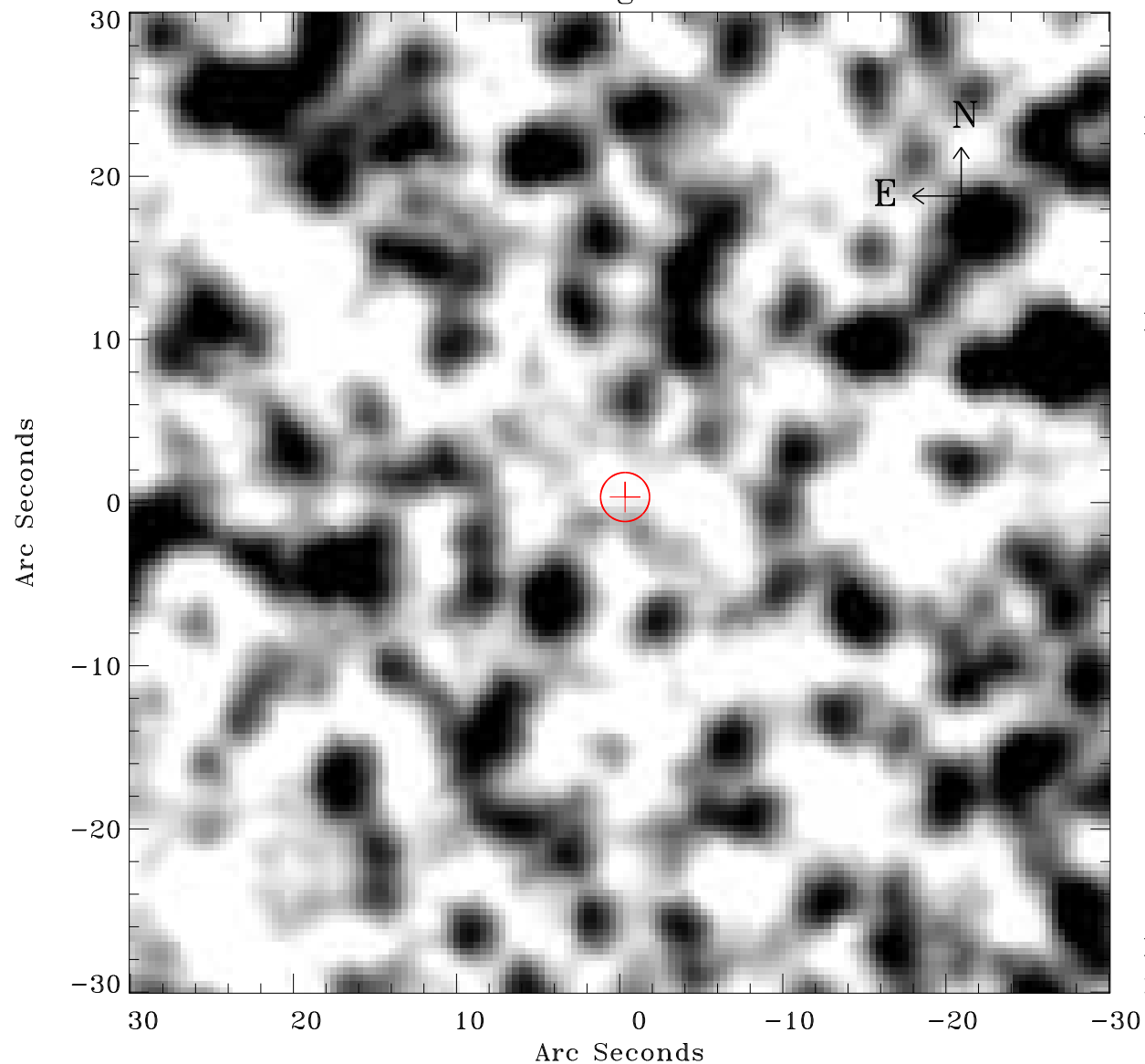


EPIC source finding chart ACDS V10.0



Principal Investigator :

Dr Frank Haberl

XMM target name :

LMC survey 61

OBS ID : 690751101

Source number : 31

X-ray coordinates :

α : 05 28 25.39

δ : -70 40 06.0

Center coordinates :

α : 05 28 25.37

δ : -70 40 05.9

Plate reference :

Origin : CDS HIPs Network

Plate : MAMA srcj

Pixel : 0.40 "/pix

Error circle :

R_{90} (") : 1.5

XMM SSC

May 3 19:33:23 2019