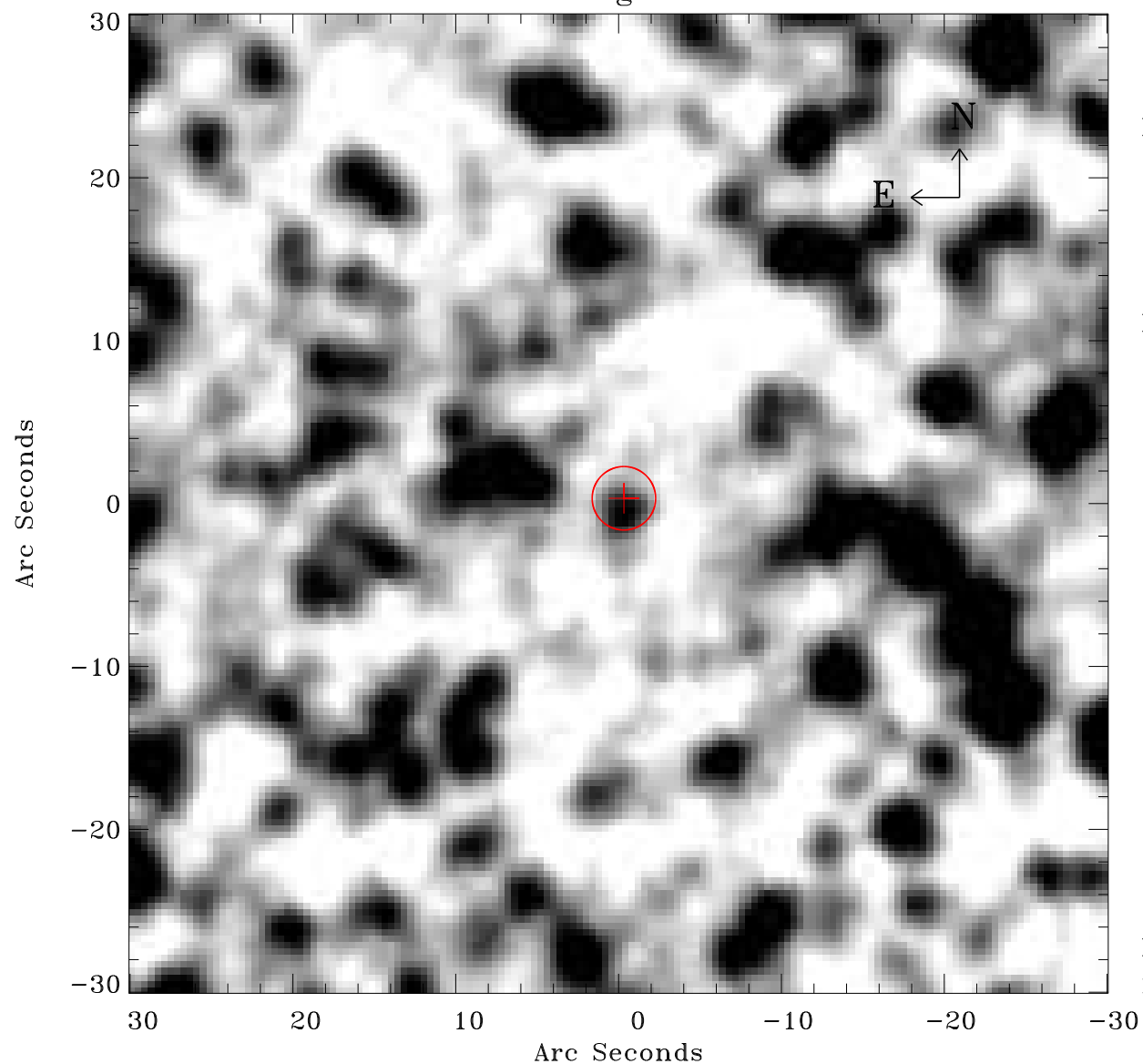


# EPIC source finding chart ACDS V10.0



Principal Investigator :

Dr Frank Haberl

XMM target name :

LMC survey 61

OBS ID : 690751101

Source number : 33

X-ray coordinates :

$\alpha$  : 05 27 41.43

$\delta$  : -70 44 22.5

Center coordinates :

$\alpha$  : 05 27 41.41

$\delta$  : -70 44 22.5

Plate reference :

Origin : CDS HIPs Network

Plate : MAMA srcj

Pixel : 0.40 "/pix

Error circle :

$R_{90}$  (") : 1.9

XMM SSC

May 3 19:32:41 2019