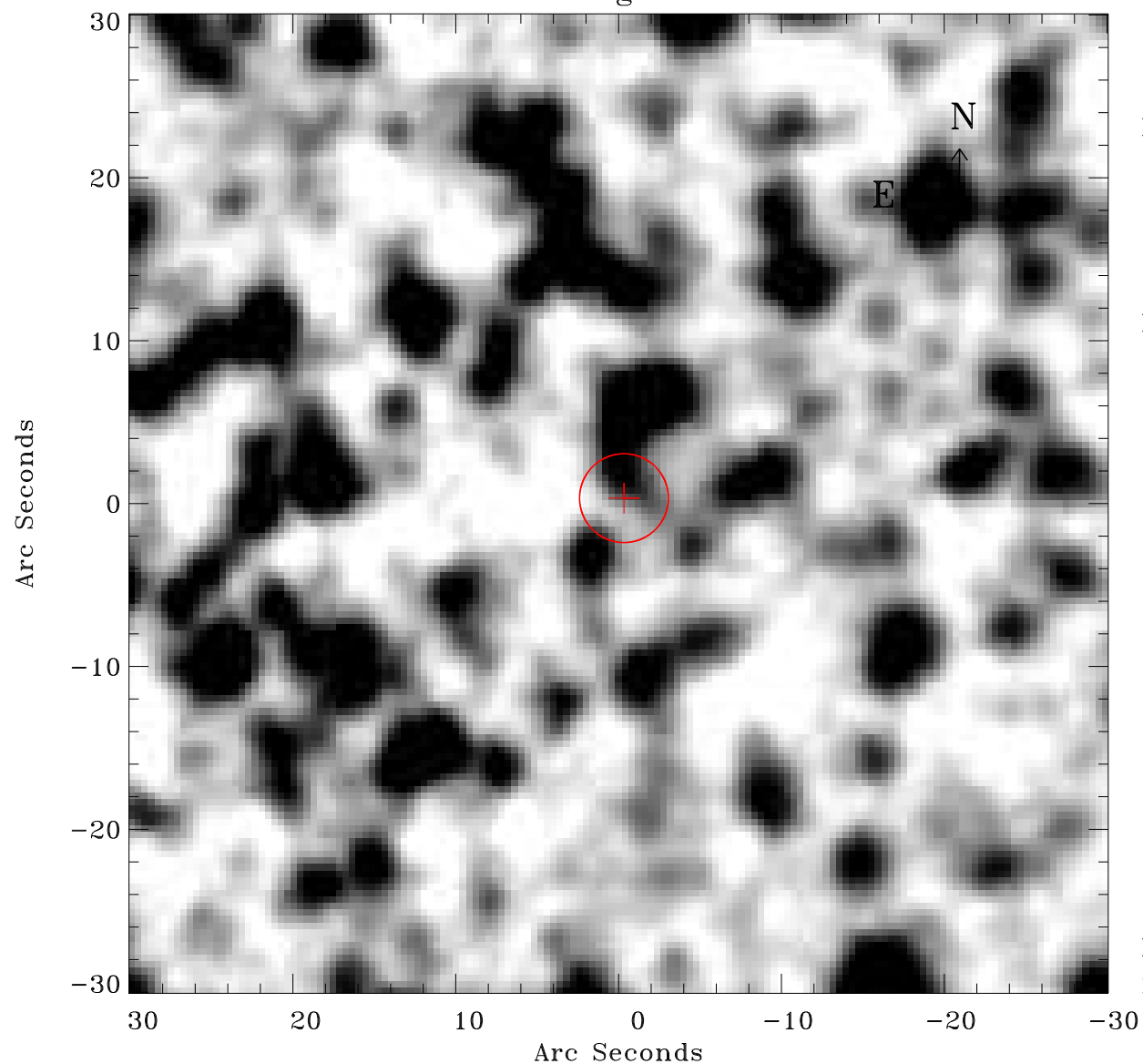


# EPIC source finding chart ACDS V10.0



Principal Investigator :

Dr Frank Haberl

XMM target name :

LMC survey 61

OBS ID : 690751101

Source number : 69

X-ray coordinates :

$\alpha$  : 05 28 38.02

$\delta$  : -70 47 27.0

Center coordinates :

$\alpha$  : 05 28 38.00

$\delta$  : -70 47 26.9

Plate reference :

Origin : CDS HIPs Network

Plate : MAMA srcj

Pixel : 0.40 "/pix

Error circle :

$R_{90}$  (") : 2.7

XMM SSC

May 3 19:33:33 2019