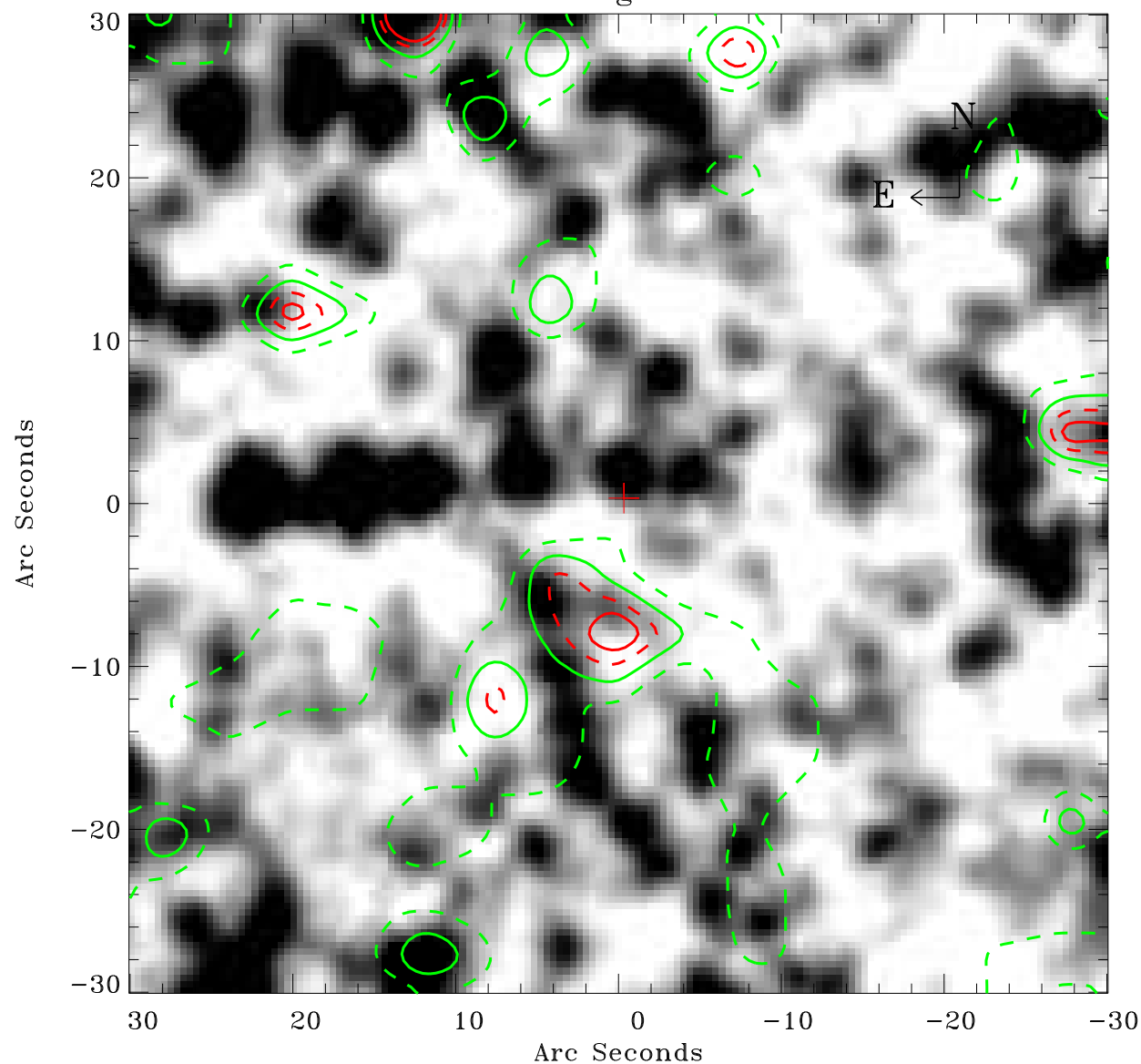


EPIC source finding chart ACDS V10.0



Principal Investigator :

Dr Frank Haberl

XMM target name :

LMC survey 61

OBS ID : 690751101

Source number : 80

X-ray coordinates :

α : 05 26 23.47

δ : -70 38 11.8

Center coordinates :

α : 05 26 23.46

δ : -70 38 11.7

Plate reference :

Origin : CDS HIPs Network

Plate : MAMA srcj

Pixel : 0.40 "/pix

Contour levels (counts) :

2.24E+00 3.15E+00

3.89E+00 4.46E+00

XMM SSC

May 3 19:32:01 2019