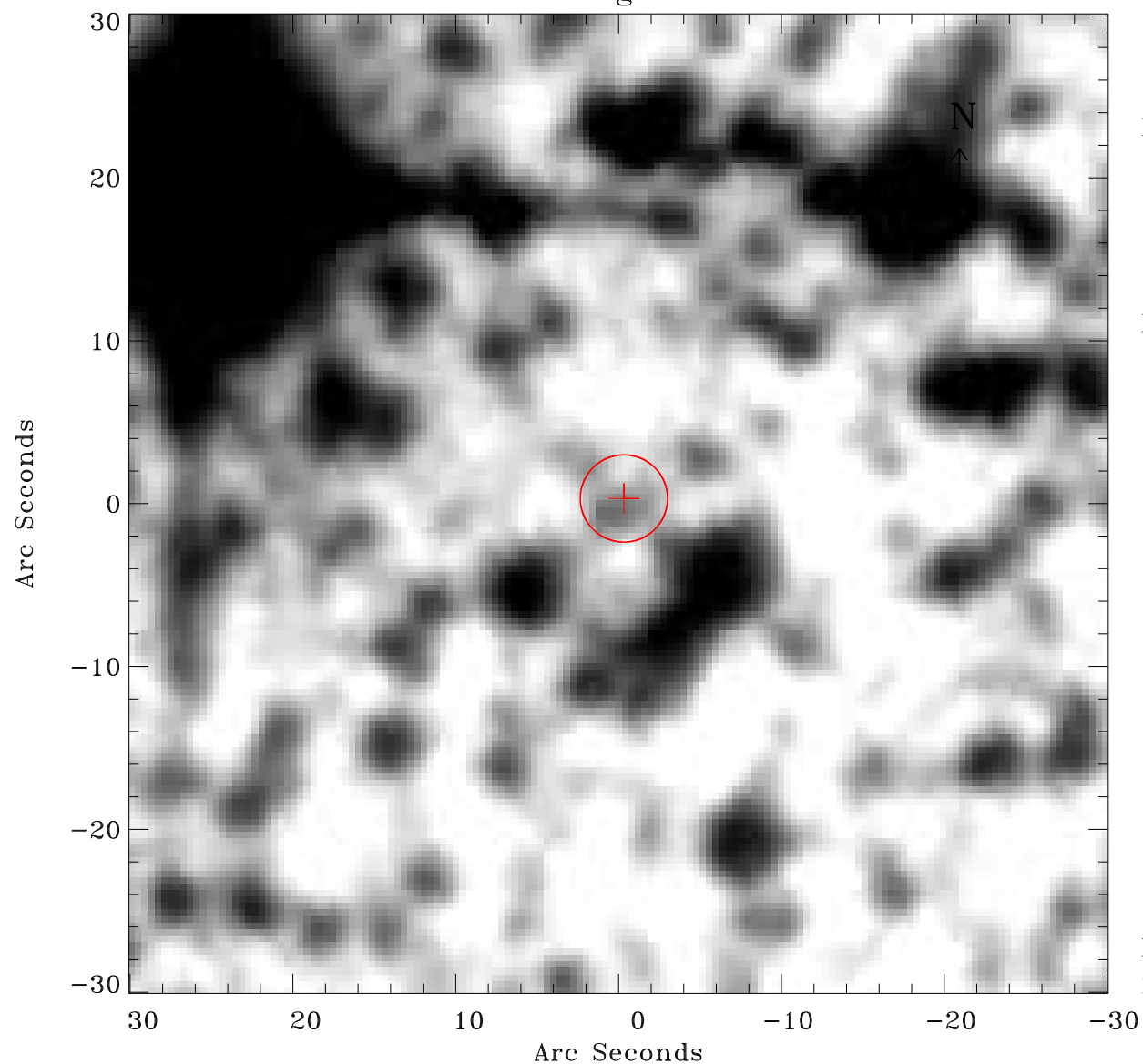


# EPIC source finding chart ACDS V10.0



Principal Investigator :

Dr Frank Haberl

XMM target name :

LMC survey 61

OBS ID : 690751101

Source number : 103

X-ray coordinates :

$\alpha$  : 05 30 10.64

$\delta$  : -70 50 06.0

Center coordinates :

$\alpha$  : 05 30 10.63

$\delta$  : -70 50 05.9

Plate reference :

Origin : CDS HIPs Network

Plate : MAMA srcj

Pixel : 0.40 "/pix

Error circle :

$R_{90}$  (") : 2.7

XMM SSC

May 3 19:34:21 2019