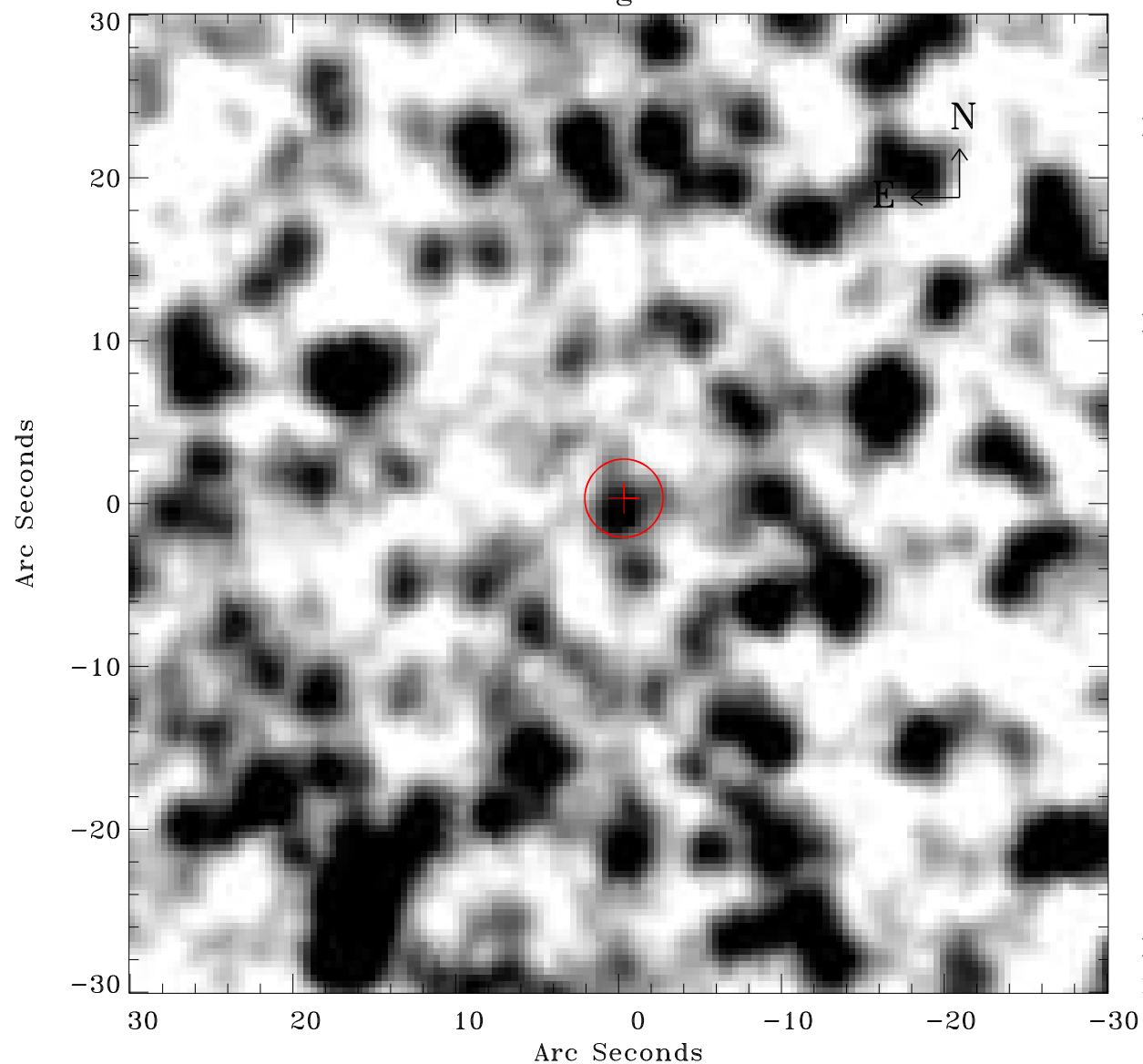


EPIC source finding chart ACDS V10.0



Principal Investigator :

Dr Frank Haberl

XMM target name :

LMC survey 61

OBS ID : 690751101

Source number : 105

X-ray coordinates :

α : 05 26 54.03

δ : -70 35 32.1

Center coordinates :

α : 05 26 54.01

δ : -70 35 32.0

Plate reference :

Origin : CDS HIPs Network

Plate : MAMA srcj

Pixel : 0.40 "/pix

Error circle :

R_{90} (") : 2.4

XMM SSC

May 3 19:32:24 2019