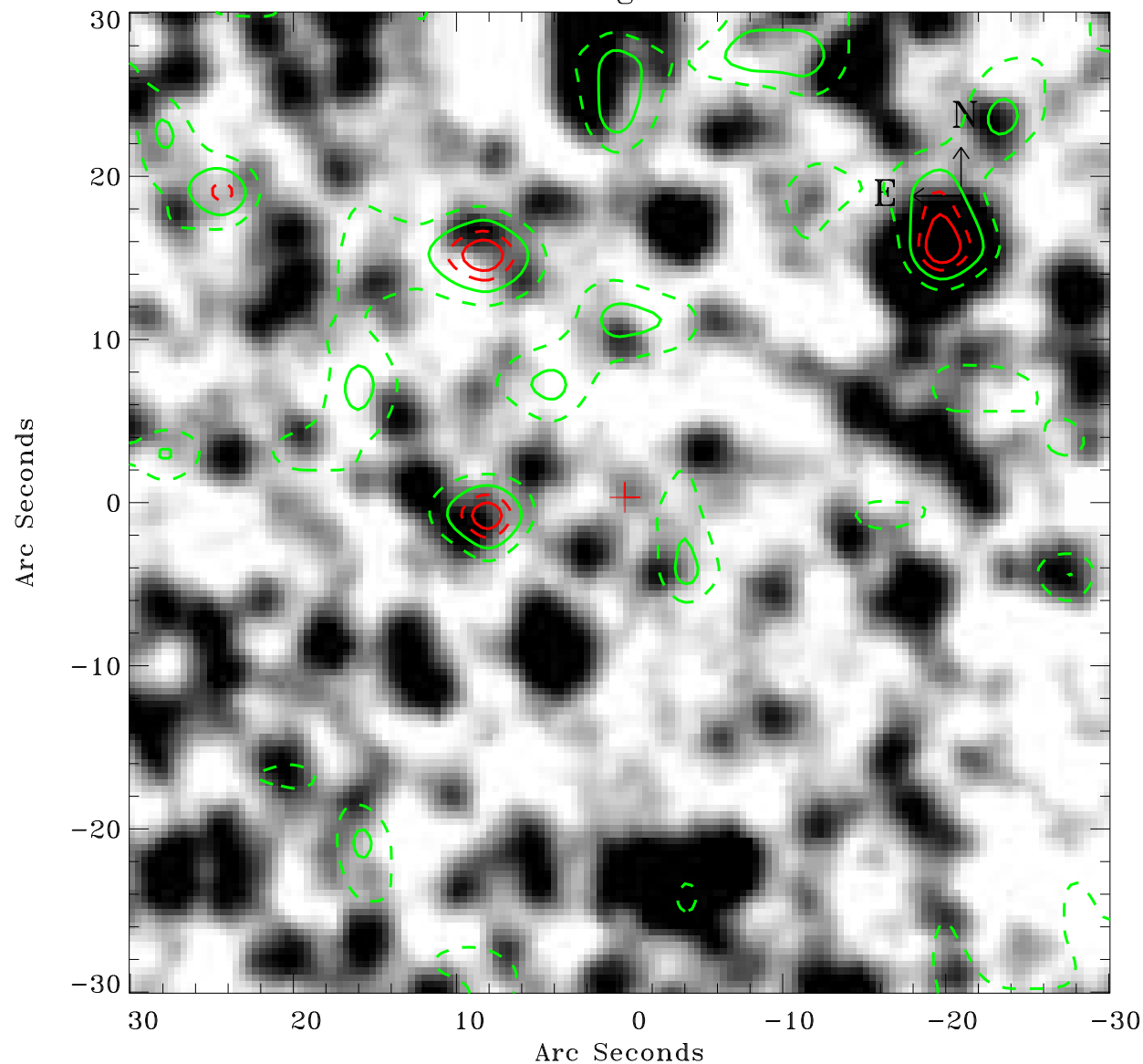


EPIC source finding chart ACDS V10.0



Principal Investigator :

Dr Frank Haberl

XMM target name :

LMC survey 61

OBS ID : 690751101

Source number : 107

X-ray coordinates :

α : 05 26 49.30

δ : -70 37 40.2

Center coordinates :

α : 05 26 49.28

δ : -70 37 40.2

Plate reference :

Origin : CDS HIPs Network

Plate : MAMA srcj

Pixel : 0.40 "/pix

Contour levels (counts) :

2.62E+00 3.56E+00

4.33E+00 4.93E+00

XMM SSC

May 3 19:32:19 2019