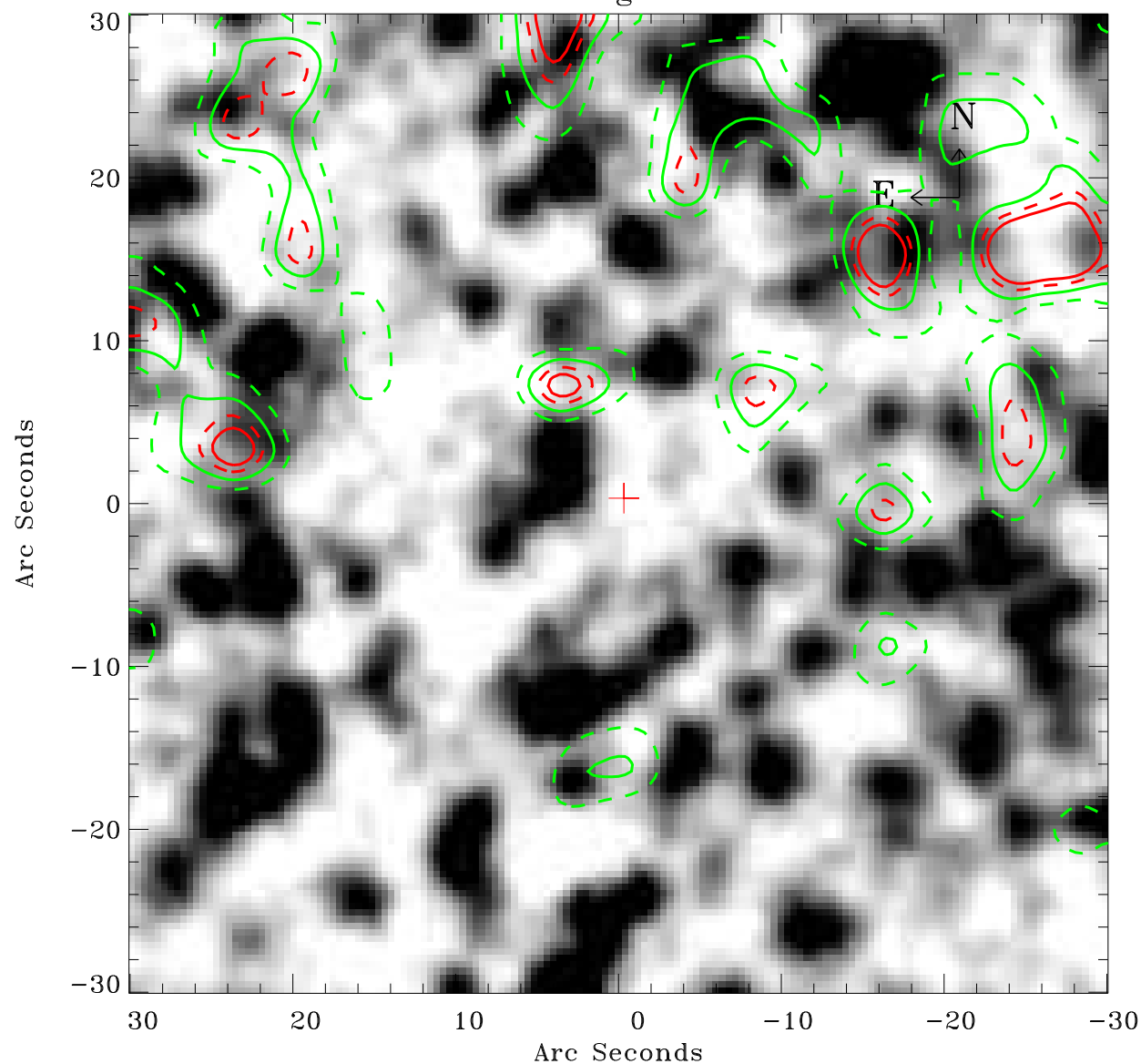


# EPIC source finding chart ACDS V10.0



Principal Investigator :

Dr Frank Haberl

XMM target name :

LMC survey 61

OBS ID : 690751101

Source number : 109

X-ray coordinates :

$\alpha$  : 05 26 17.47

$\delta$  : -70 42 22.8

Center coordinates :

$\alpha$  : 05 26 17.46

$\delta$  : -70 42 22.8

Plate reference :

Origin : CDS HIPs Network

Plate : MAMA srcj

Pixel : 0.40 "/pix

Contour levels (counts) :

2.02E+00 2.86E+00

3.51E+00 4.01E+00

XMM SSC

May 3 19:31:59 2019