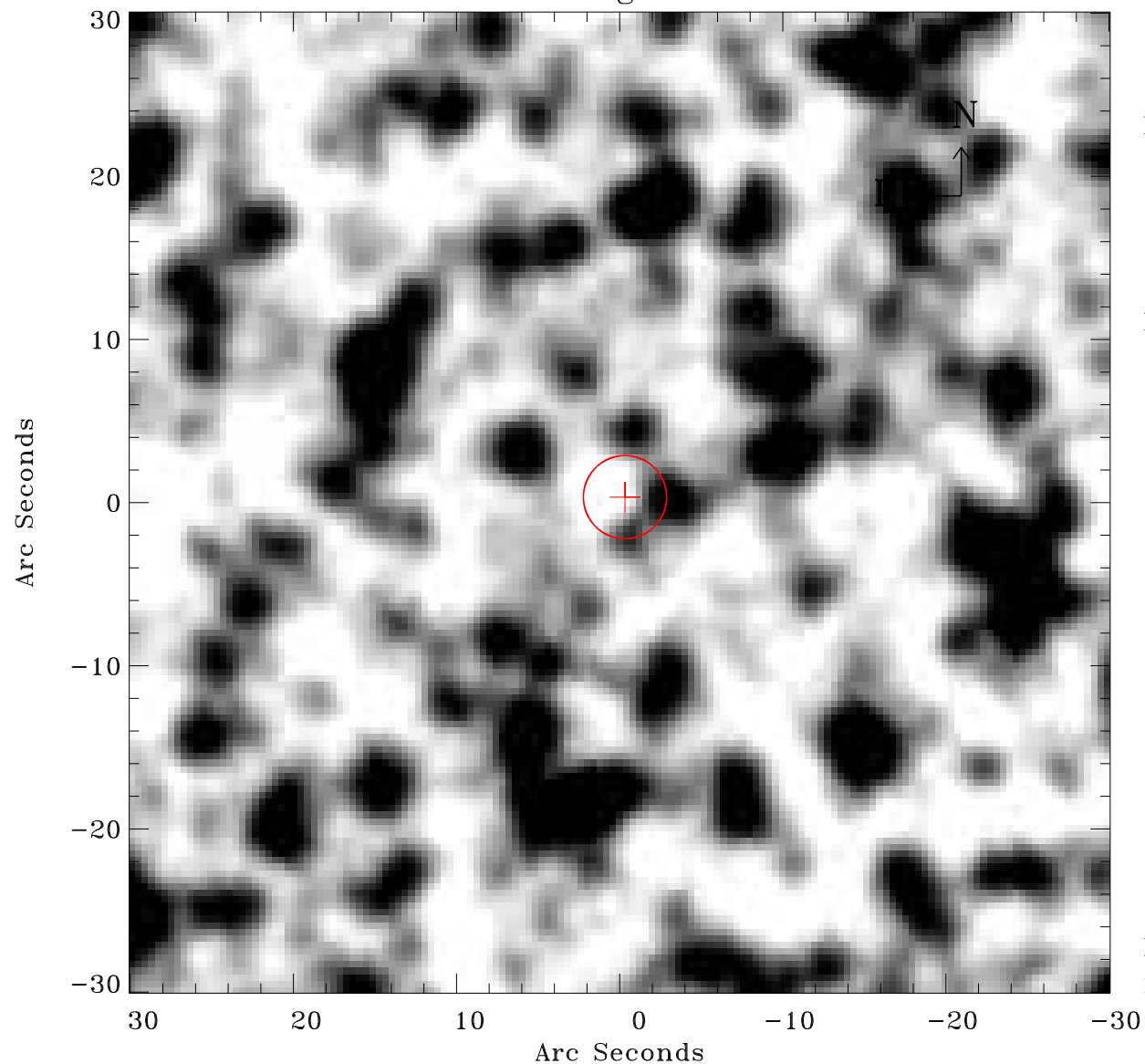


EPIC source finding chart ACDS V10.0



Principal Investigator :

Dr Frank Haberl

XMM target name :

LMC survey 61

OBS ID : 690751101

Source number : 110

X-ray coordinates :

α : 05 26 52.56

δ : -70 42 04.5

Center coordinates :

α : 05 26 52.54

δ : -70 42 04.5

Plate reference :

Origin : CDS HIPs Network

Plate : MAMA srcj

Pixel : 0.40 "/pix

Error circle :

R_{90} (") : 2.5

XMM SSC

May 3 19:32:21 2019